

# Access

HOUSE & LAND PACKAGE

# WILSON HOMES

MULTI AWARD WINNING BUILDERS



LOT 62

St Claire Estate LATROBE TAS  
7307

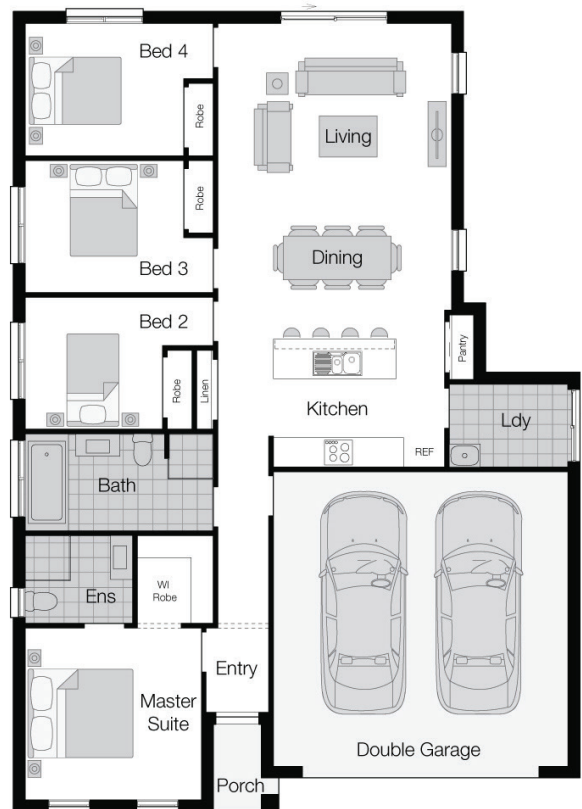
# \$370,300\*

LAND COST \$100,000

LOT SIZE 605m<sup>2</sup>

Levante - Grange

 4  2  2



Note: Floorplan shown may not represent packaged facade.

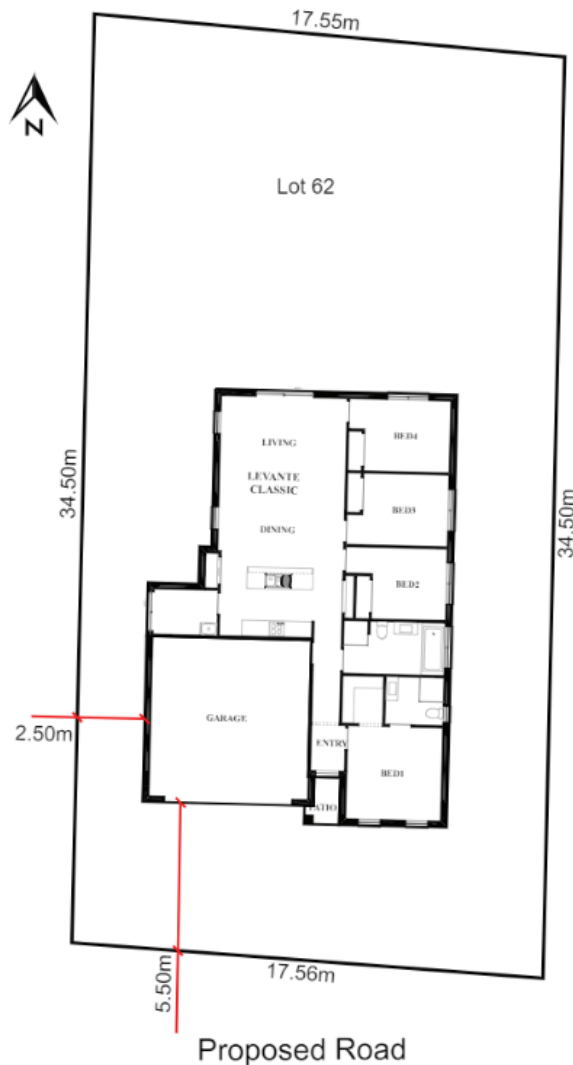
For more information call

# 1300 595 050

**FREE \$10,000**  
MYCHOICE DESIGN STUDIO VOUCHER

**INSPIRED LIVING PACKAGE\***  
FREE FLOORING & FREE 20MM SMARTSTONE KITCHEN BENCHTOP

\*See important Information Back Page



## DESIGN FEATURES

The Levante is the perfect choice for modern families.

## FULL OF LUXURY INCLUSIONS

- Designer inclusion package
- Concrete slab
- Brick veneer construction
- MGP10 pine timber frame
- Double glazing
- Insulation R2.0 wall + R4.1 to ceilings batts
- External Wall wrap
- Daikin reverse cycle heat pump
- Colorbond roof including sarking
- Stainless steel appliances
- Internal flooring
- 12 year structural guarantee

## ADDITIONAL INCLUSIONS

- Site costs
- Site fall and scaffolding costs
- Connections to Town services (mains)
- Natural finish concrete driveway
  
- 20mm Smartstone kitchen benchtops
- Tiled shower base/s

Contact: Chelsea Rimmer

Email: [crimmer@wilsonhomes.com.au](mailto:crimmer@wilsonhomes.com.au)

Phone: 0409547504