

# Access

HOUSE & LAND PACKAGE

# WILSON HOMES

MULTI AWARD WINNING BUILDERS



LOT 4

Williams Street, Brighton  
BRIGHTON TAS 7030

# \$388,700\*

LAND COST \$155,000

LOT SIZE 656m<sup>2</sup>

Corsica SG - Classic SG

 3  2  1



Note: Floorplan shown may not represent packaged facade.

For more information call

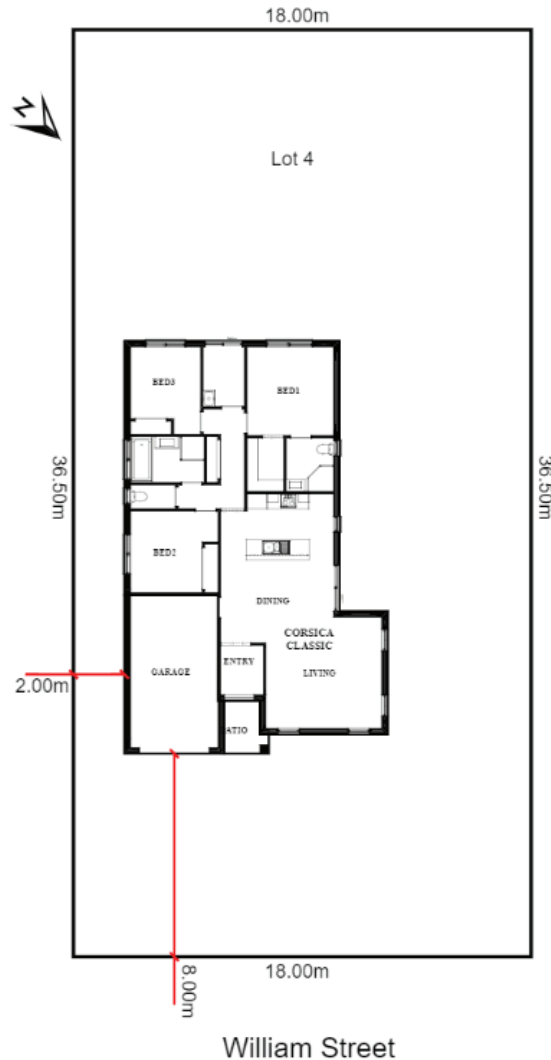
# 1300 595 050

**FREE \$10,000**  
MYCHOICE DESIGN STUDIO VOUCHER

**INSPIRED  
LIVING  
PACKAGE\***

FREE FLOORING  
& FREE 20MM  
SMARTSTONE  
KITCHEN BENCHTOP

\*See important Information Back Page



## DESIGN FEATURES

The Corsica offers plenty of space to entertain from when you enter the home, extending into the spacious living, dining and kitchen.

## FULL OF LUXURY INCLUSIONS

- Designer inclusion package
- Concrete slab
- Brick veneer construction
- MGP10 pine timber frame
- Double glazing
- Insulation R2.0 wall + R4.1 to ceilings batts
- External Wall wrap
- Daikin reverse cycle heat pump
- Colorbond roof including sarking
- Stainless steel appliances
- Internal flooring
- 12 year structural guarantee

## ADDITIONAL INCLUSIONS

- Site costs
- Site fall and scaffolding costs
- Connections to Town services (mains)
- Natural finish concrete driveway
  
- 20mm Smartstone kitchen benchtops
- Tiled shower base/s

Contact: Stacey Blackwell

Email: [sblackwell@wilsonhomes.com.au](mailto:sblackwell@wilsonhomes.com.au)

Phone: 0415865189