

Access

HOUSE & LAND PACKAGE

WILSON HOMES

MULTI AWARD WINNING BUILDERS



LOT 37

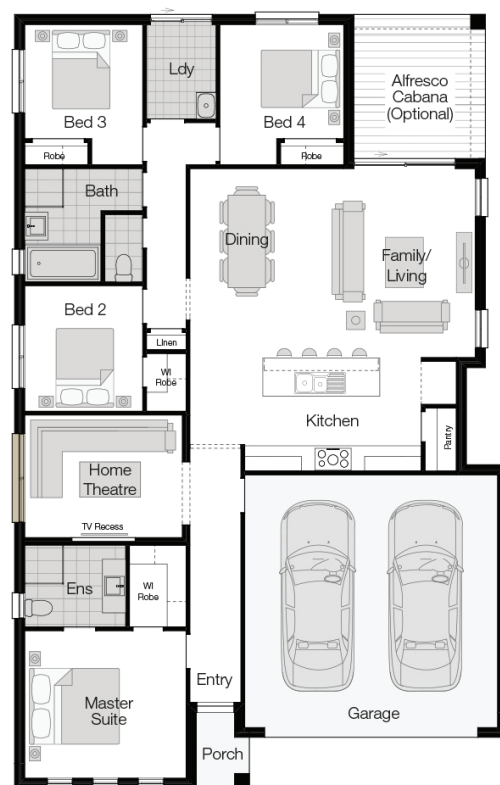
St Claire LATROBE TAS 7307

\$413,600*

LAND COST \$100,000

LOT SIZE 744.8m²

Sierra - Classic



Note: Floorplan shown may not represent packaged facade.

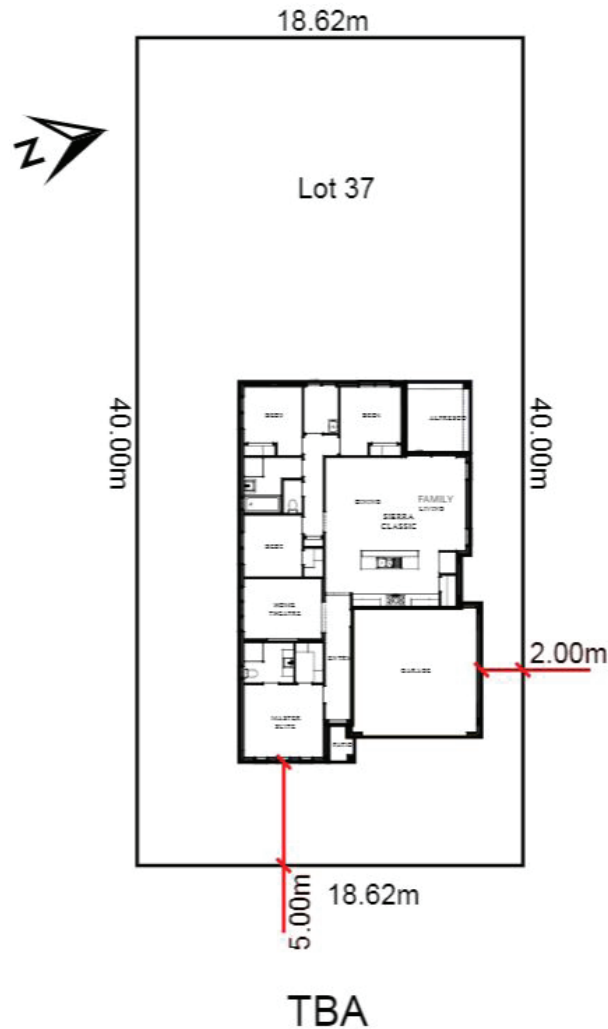
For more information call

1300 595 050

FREE \$10,000
MYCHOICE DESIGN STUDIO VOUCHER

**Alfresco Cabana
INCLUDED**

*See important Information Back Page



DESIGN FEATURES

The Sierra is family living at its best

FULL OF LUXURY INCLUSIONS

- Next Gen inclusion package
- Concrete slab
- Brick veneer construction
- MGP10 pine timber frame
- Double glazing
- Internal flooring "Clix and carpet
- Insulation R2.0 wall + R4.1 to ceilings batts
- Dakin reverse cycle heat pump
- Colorbond roof including sarking
- 20mm Smartstone kitchen and vanity tops
- 12 year structural guarantee

ADDITIONAL INCLUSIONS

- Site costs
- Site fall and scaffolding costs
- Connections to Town services (mains)
- Natural finish concrete driveways
- Tiled shower bases

Contact: Chelsea Rimmer

Email: crimmer@wilsonhomes.com.au

Phone: 0409547504