

# Access

HOUSE & LAND PACKAGE

# WILSON HOMES

MULTI AWARD WINNING BUILDERS



LOT 37

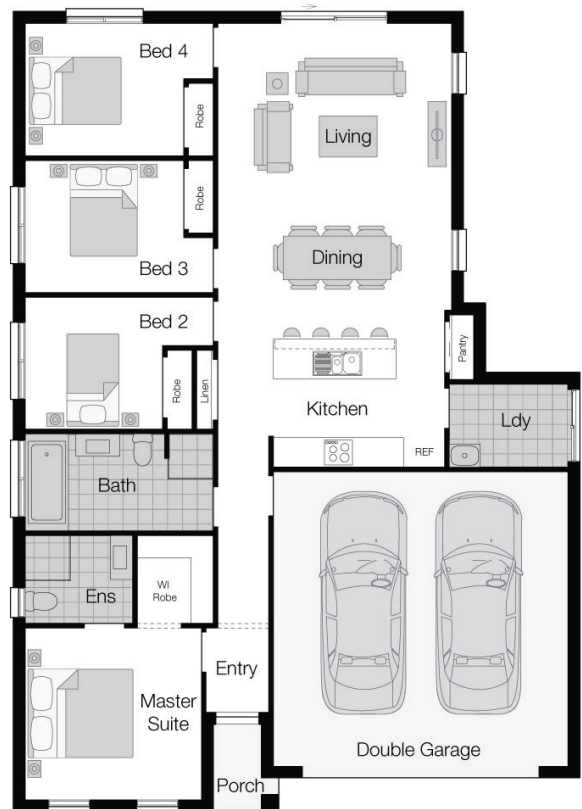
St Claire LATROBE TAS 7307

# \$353,800\*

LAND COST \$100,000

LOT SIZE 744.8m<sup>2</sup>

Levante - Classic



Note: Floorplan shown may not represent packaged facade.

For more information call

# 1300 595 050



\*See important Information Back Page



## DESIGN FEATURES

The Levante is the perfect choice for modern families.

## FULL OF LUXURY INCLUSIONS

- Designer inclusion package
- Concrete slab
- Brick veneer construction
- MGP10 pine timber frame
- Double glazing
- Insulation R2.0 wall + R4.1 to ceilings batts
- External Wall wrap
- Dakin reverse cycle heat pump
- Colorbond roof including sarking
- Stainless steel appliances
- Internal flooring "Clax and carpet
- 12 year structural guarantee

## ADDITIONAL INCLUSIONS

- Site costs
- Site fall and scaffolding costs
- Connections to Town services (mains)
- Natural finish concrete driveways
- Roller blinds to all windows and doors (excluding wet areas)
- Tiled shower base

Contact: Chelsea Rimmer

Email: [crimmer@wilsonhomes.com.au](mailto:crimmer@wilsonhomes.com.au)

Phone: 0409547504