

Access

HOUSE & LAND PACKAGE

WILSON HOMES

MULTI AWARD WINNING BUILDERS



LOT 32

Mersey Fields Estate LATROBE
TAS 7307

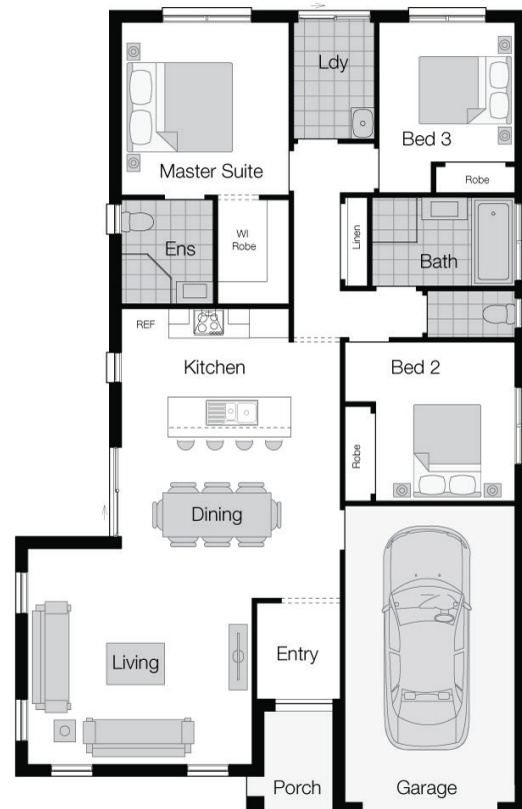
\$322,200*

LAND COST \$99,500

LOT SIZE 736m²

Corsica - Classic

 3  2  1



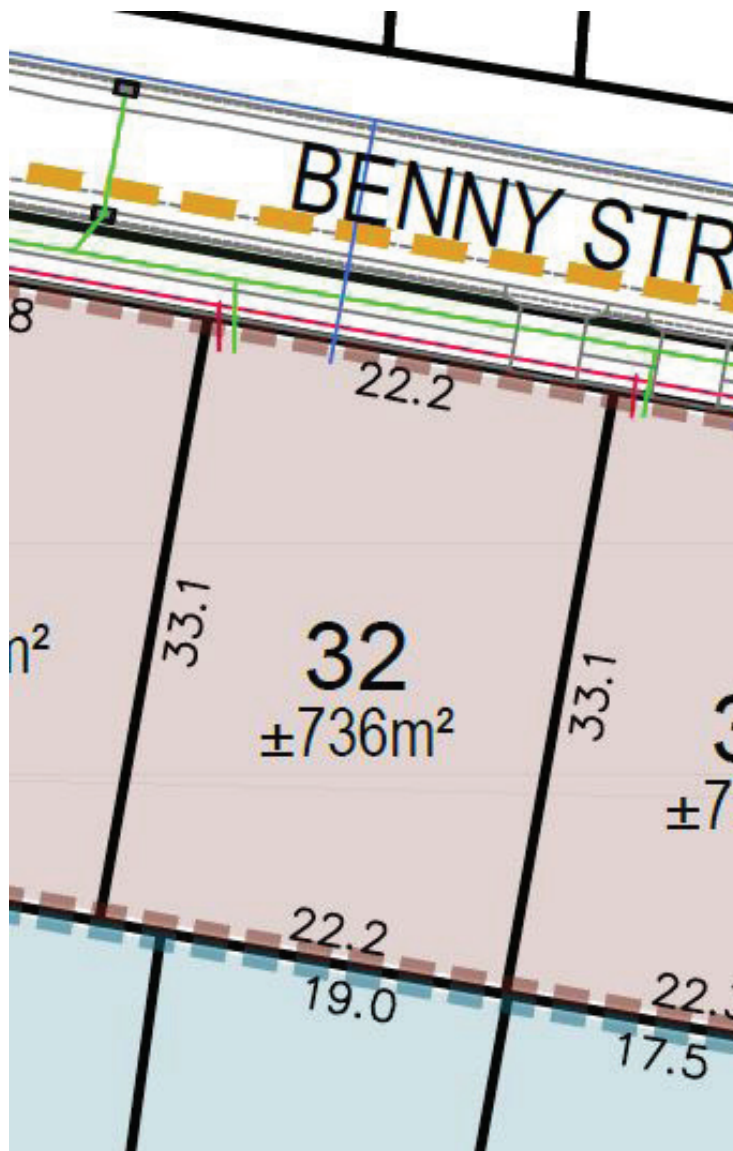
Note: Floorplan shown may not represent packaged facade.

For more information call

1300 595 050

FREE \$10,000
MYCHOICE DESIGN STUDIO VOUCHER

*See important Information Back Page



DESIGN FEATURES

The Corsica offers plenty of space to entertain from when you enter the home, extending into the spacious living, dining and kitchen.

FULL OF LUXURY INCLUSIONS

- Designer inclusion package
- Concrete slab
- Brick veneer construction
- MGP10 pine timber frame
- Double glazing
- Insulation R2.0 wall + R4.1 to ceilings batts
- External Wall wrap
- Dakin reverse cycle heat pump
- Colorbond roof including sarking
- Stainless steel appliances
- Internal flooring "Clax and carpet
- 12 year structural guarantee

ADDITIONAL INCLUSIONS

- Site costs
- Site fall and scaffolding costs
- Connections to Town services (mains)
- Natural finish concrete driveways

- Roller blinds to all windows and doors (excluding wet areas)
- Tiled shower base

Contact: Chelsea Rimmer

Email: crimmer@wilsonhomes.com.au

Phone: 0409547504