

# Split Contract

HOUSE & LAND PACKAGE

# WILSON HOMES

MULTI AWARD WINNING BUILDERS



LOT 21

Oakdowns Estate OAKDOWNS  
TAS 7019

# \$405,800\*

LAND COST \$160,000

LOT SIZE 641m<sup>2</sup>

Corsica DG - Classic DG

 3  2  2



Note: Floorplan shown may not represent packaged facade.

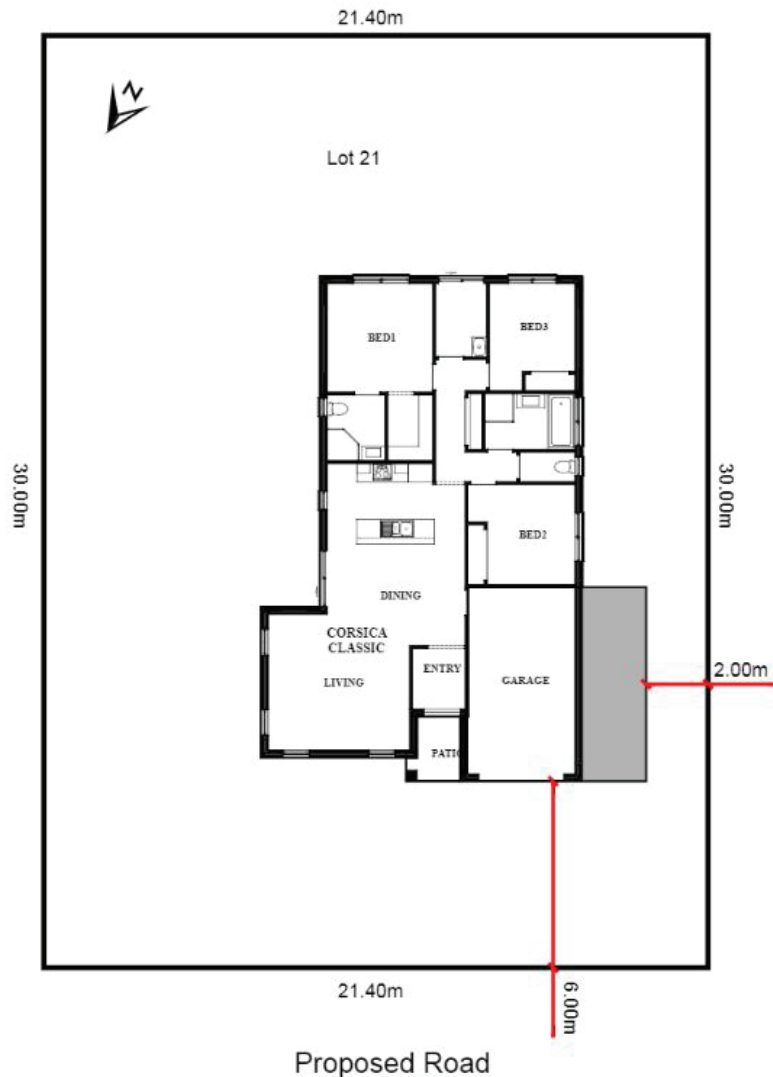
For more information call

# 1300 595 050

**FREE \$10,000**  
MYCHOICE DESIGN STUDIO VOUCHER

**WE'VE GOT IT COVERED**  
LIGHT FITTINGS + ROLLER BLINDS + FLOORING

\*See important Information Back Page



## DESIGN FEATURES

The Corsica offers plenty of space to entertain from when you enter the home, extending into the spacious living, dining and kitchen.

## FULL OF LUXURY INCLUSIONS

- Designer inclusion package
- Concrete slab
- Brick veneer construction
- MGP10 pine timber frame
- Double glazing
- Insulation R2.0 wall + R4.1 to ceilings batts
- External Wall wrap
- Daikin reverse cycle heat pump
- Colorbond roof including sarking
- Stainless steel appliances
- Internal flooring
- 12 year structural guarantee

## ADDITIONAL INCLUSIONS

- Site costs
- Site fall and scaffolding costs
- Connections to Town services (mains)
- Natural finish concrete driveway
- Roller blinds to all windows and doors (excluding wet areas)
- Tiled shower base/s

Contact: Scott Wilson

Email: [swilson@wilsonhomes.com.au](mailto:swilson@wilsonhomes.com.au)

Phone: 0419130688