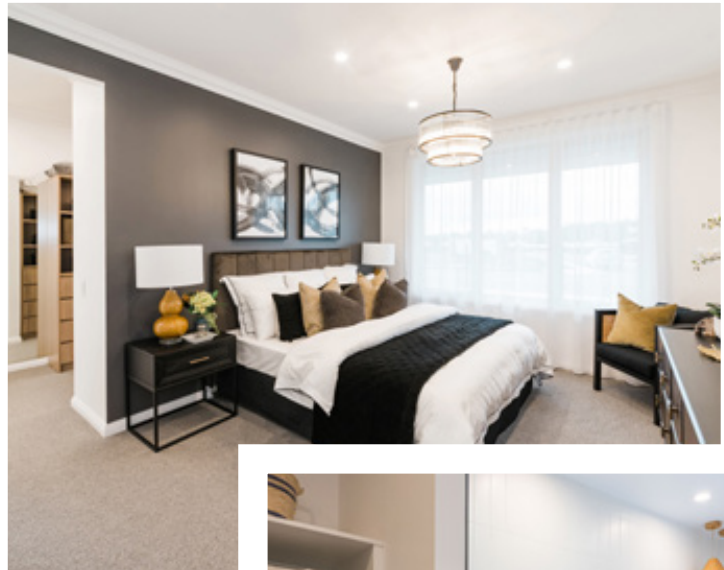




DARE *to* COMPARE



next gen

1300 595 050
wilsonhomes.com.au

STANDARD INCLUSIONS			NEXTGEN	ASPIRE	BUILDER 1	BUILDER 2
ESSENTIALS	PRE-CONSTRUCTION CONFIDENCE	Contour Survey, Soil Report, Energy Assessment, Engineered Slab Design	✓	✓	☐	☐
		365 day Fixed Price Period (from date of Deposit)	✓	✓	☐	☐
		Fixed price HIA contract, plan & specification	✓	✓	☐	☐
		Council building application fees (standard application only, excludes additional council fee/contributions, town planning services &/ or relaxations etc)	✓	✓	☐	☐
STRUCTURAL	CONCRETE SLAB	Flexibility to redesign home to suit your needs and block orientation	✓	✓	☐	☐
	FRAME WORK	25 MPA slab concrete and 90mm pine MGP10 wall framing with pre-fabricated roof trusses	✓	✓	☐	☐
EXTERIOR	WALL CONSTRUCTION	Select from 25 specially curated bricks, chosen by our Interior Designers to ensure your home will reflect your chosen style. Austral Bricks included ranges: Access, Homestead, Coach house and Yarrah. Includes Natural Mortar	✓	✓	☐	☐
		Pro Clima R1.0 Permeable wall & ceiling wrap	✓	✓	☐	☐
	FACADE	Architect designed Modern Classic facade	✓	✓	☐	☐
	ROOF & GUTTERS	COLORBOND® steel roof with 23 degree roof pitch	✓	✓	☐	☐
		COLORBOND® gutters, fascia with PVC down pipes	✓	✓	☐	☐
		R4.0 Insulation batts to ceiling including outdoor living and garage	✓	✓	☐	☐
		Fully lined plaster ceiling with painted timber beading to outdoor living (Design specific)	✓	✓	☐	☐
	OUTDOOR LIVING	Strammit slotted Quad Gutter and Fascia available in full range of Colorbond colours	✓	✓	☐	☐
		Fully lined plaster ceiling to porch and alfresco (design specific)	✓	✓	☐	☐
		Reinforced concrete Porch and Alfresco. Tiles to balconys (Design Specific)	✓	✓	☐	☐
	Two external taps	✓	✓	☐	☐	
WINDOWS, DOORS & GARAGE	WINDOWS	Powder coated aluminium windows & sliding doors including keyed locks & clear glazing	✓	✓	☐	☐
		Double glazed aluminium awning windows throughout	✓	✓	☐	☐
	EXTERNAL ACCESS DOORS	Entry Door - Corinthian Madison Range 2340mm High Painted Door	✗	✓	☐	☐
		Clear glazed Aluminium sliding door to Alfresco and Laundry (Design specific)	✓	✓	☐	☐
		Entry Door furniture - Choice of Pull Entrance Handle or Nexion Entrance Lockset	✗	✓	☐	☐
GARAGE	COLORBOND® sectional Garage door in Slimline, Flatline, Ranch or Heritage profile with 3 remotes	✓	✓	☐	☐	

STANDARD INCLUSIONS			NEXTGEN	ASPIRE	BUILDER 1	BUILDER 2	
INTERIOR	FLOORING	Selection of ceramic floor tiles with over 20 options to all wet areas	✓	✓	☐	☐	
		Selection of Clix timber laminate with 10 colour options to Entry, open living areas and Kitchen	✓	✓	☐	☐	
		Selection of Polyester carpets to Bedrooms, Halls and Entertainment rooms	✓	✓	☐	☐	
	CEILING	Bulkheads throughout as per plan	✗	✓	☐	☐	
		Ceiling height - Single storey 2550mm. Double storey 2550mm high to main living floors and 2440mm to bedroom floor	✗	✓	☐	☐	
		Square set to Entry, Living, Hallways and Master Suite. 75mm Coved cornice to remainder of home	✗	✓	☐	☐	
	WARDROBES	2040mm High flush panel internal swinging doors with paint finish	✓	✓	☐	☐	
		Melamine top shelf with single hanging rail to Robes	✓	✓	☐	☐	
		Four (4) melamine shelves to Linen cupboard (design specific)	✓	✓	☐	☐	
	INTERNAL DOORS	Door furniture - Choice of Lockwood internal lever sets in chrome or satin	✓	✓	☐	☐	
		Internal Doors - 2040 high Flush Panel Internal PMDF Doors including robes and linen	✓	✓	☐	☐	
		Chrome cushioned door stops to all internal doors	✓	✓	☐	☐	
	PAINTING	Taubmans Endure 3 coat paint system to all internal walls and 2 coats to ceiling	✓	✓	☐	☐	
		Taubmans Ultimate Enamel 2 coat system to Architraves and Skirts	✓	✓	☐	☐	
	KITCHEN	APPLIANCES	Fisher and Paykel 900mm built in oven	✗	✓	☐	☐
			Fisher and Paykel 900mm Canopy Rangehood	✓	✓	☐	☐
Fisher and Paykel 900mm Cooktop			✗	✓	☐	☐	
Fisher and Paykel built in microwave with trim kit			✗	✓	☐	☐	
Fisher and Paykel 60cm stainless steel dishwasher			✓	✓	☐	☐	
SPLASHBACK		Tiled splashback to kitchen from Extensive My Choice range	✓	✓	☐	☐	
BENCHTOP		20mm Engineered Stone to kitchen – up to 10 different colour options	✓	✓	☐	☐	
		Sink - Clark Polar Double undermount sink	✓	✓	☐	☐	
		Mixer - Choice of Mizu Soothe or Mizu Drift Pullout Mixer	✗	✓	☐	☐	
CABINETRY		Choose from a wide range Melamine standard colours from Polytec in a matt finish. Includes 2 colours to Kitchen cabinetry and a 3rd colour to Kickboards.	✓	✓	☐	☐	
		Hafele soft close drawer runners to cutlery drawers	✓	✓	☐	☐	
		Soft close blum hinges to all cupboards	✓	✓	☐	☐	
		Overhead cupboards to kitchen either side of exposed rangehood	✓	✓	☐	☐	
		Choice of a wide range of handles from the Lincoln sentry range	✓	✓	☐	☐	
		Kitchen Bulkheads	✗	✓	☐	☐	
		Water point to fridge space	✗	✓	☐	☐	

STANDARD INCLUSIONS

NEXTGEN

ASPIRE

BUILDER 1

BUILDER 2

		STANDARD INCLUSIONS	NEXTGEN	ASPIRE	BUILDER 1	BUILDER 2
BATHROOM & ENSUITE	BATH	Caroma Newbury island bath with tiled hob surround equal to all four sides	✓	✓	☐	☐
	SHOWER	Semi frameless 2000mm high shower screen with slimline stainless steel hob	✓	✓	☐	☐
		Shower heads - Mizu drift twin water rail in chrome to Ensuite and Mizu drift Single Water rail in Chrome to Bathroom	✗	✓	☐	☐
		Tiled Shower base	✓	✓	☐	☐
		Externally ducted exhaust fans (design specific)	✓	✓	☐	☐
	TILES	Choose from a wide range of included tiles to Floor, shower, bath and skirting	✓	✓	☐	☐
	VANITY	Choice of Floor mount or wall hung joinery made vanity with double portrait doors	✗	✓	☐	☐
		20mm Engineered Stone to vanity tops – up to 10 different colour options	✓	✓	☐	☐
		Soft close blum hinges to all vanity doors	✓	✓	☐	☐
		Choice of 3 contemporary semi inset basins for Bathroom, Ensuite and including pop up wastes	✗	✓	☐	☐
	MIRROR	Polished edge contemporary frameless mirror to all vanities	✓	✓	☐	☐
	TOILET & ACCESSORIES	Choice of 3 Mizu accessory ranges. Mizu Drift, Mizu Soothe and Mizu Bloc in chrome only	✗	✓	☐	☐
		Choice of 3 Mizu tapwear ranges. Mizu Drift, Mizu Soothe and Mizu Bloc in chrome only	✗	✓	☐	☐
Posh Domaine BTW rimless toilet with soft close quick release seat		✓	✓	☐	☐	
LAUNDRY		Up to 1000mm of Laminate bench space	✗	✓	☐	☐
		32mm Laminated benchtop	✗	✓	☐	☐
		Base sink mixer MKII 6 star	✓	✓	☐	☐
		Stainless steel 42L drop in tub	✗	✓	☐	☐
		Wide selection of ceramic floor tiles and splashback tiling	✓	✓	☐	☐
		Choice from a wide variety of Polytec melamine standard colours	✓	✓	☐	☐
PLUMBING, ELECTRICAL & GAS	AIR CONDITIONING	Daikin 7kw reverse cycle heat pump	✓	✓	☐	☐
	LIGHTING	Clipsal Iconic Light Switches in Vivid White. 1x two way switch.	✗	✓	☐	☐
		10 LED Downlights to open living, One light point with batten holder and bulb to bedrooms and remaining One LED Downlight to front porch, one batten holder to outdoor living (design specific)	✗	✓	☐	☐
	CONNECTIONS	Two TV Points (Antenna not included)	✓	✓	☐	☐
		Two double power points to master suite and one double powerpoint to all other rooms	✓	✓	☐	☐
		Hard wired smoke detectors	✓	✓	☐	☐
	HOT WATER SYSTEM	Rheem 491 Series 315L Single element hot water system	✗	✓	☐	☐