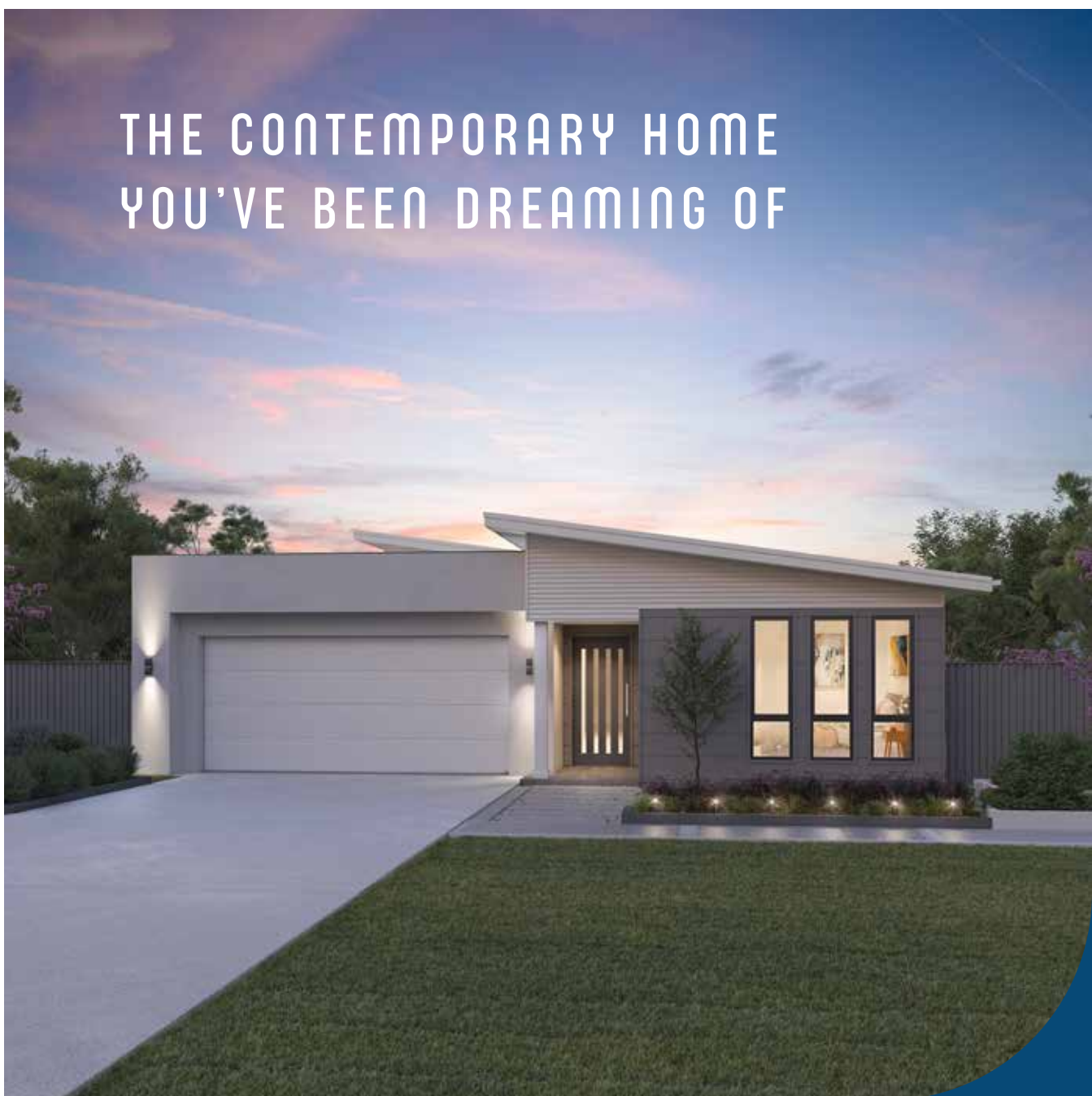


# DESIGNER *Collection*

THE CONTEMPORARY HOME  
YOU'VE BEEN DREAMING OF



1300 595 050  
[wilsonhomes.com.au](http://wilsonhomes.com.au)

**W** WILSON  
HOMES

# WHY WILSON HOMES?

---

**Building a new home is one of the biggest, most exciting commitments you can make. Our team will provide you with personal care and great service through every step of your building journey, because we truly care.**

We strive to build remarkable homes, realised through our award-winning experience, commitment to innovation and quality partnerships with our trades and suppliers.

Our range of homes showcase the diversity and vibrance of the Tasmanian landscape. We celebrate great design and continuously search for new styles and trends to inspire our customers.

Through our support of community organisations, we aim to enhance the lives of the individuals and families – building better futures for all Tasmanians.

We are proud to build homes that people fall in love with, where they live, every day.



## Quality at our core

Our mission is to provide the highest quality homes to every customer. As such we confidently carry out quality inspections, so you don't need to just take our word for it!



## More than 30 years experience

From humble beginnings, growing to the state's largest builder, we have proudly built Tasmanian homes for over three decades. As a part of the MJH Group we now have the backing of one of Australia's most experienced building companies, ensuring we continue to provide our clients with great product, service and security that only a large builder can.



## We are here for you

Our highly experienced team support you throughout each stage of your build. We also give you access to MyHome Customer Portal which allows you to view the most current updates as your new home is being built. You can view your progress stages, find out information in the FAQ's, access your contacts, as well as download your photo's anytime to share with family and friends.



## We truly care about you

Our dedicated state-wide CustomerCARE program is designed to give you peace of mind from the moment you get your keys and into the future. Our specialist team will carry out any necessary work professionally and our 24 hour 7 day a week emergency assistance line means we are never far away if you need us.



*Creating homes for generations to come*



### **MyChoice Design Studio**

When you visit our MyChoice Design Studio you will be excited and immersed in the possibilities. Our qualified Interior Designers will take the time to work with you understand your design and trend preferences to create your dream home.



### **Financial solutions - Bank of us**

We aim to take the stress out of building a new home and that is evident from our long standing relationship with Bank of Us, who are construction finance experts. Wilson Homes customers can access competitive interest rates and specifically tailored loan products - enabling your new home dreams to become a reality.



### **Architecturally designed homes**

Skilfully crafted with passion and pride, our range of home designs are smart and practical; reshaping contemporary living to enhance home life for all Tasmanians. Our architectural collection of homes are expertly designed, stylish and seamlessly functional for modern family living. Visit our display homes today to experience the clever layouts and effortless flow of our homes.



### **30 Year Structural Guarantee**

As Tasmania's Largest Builder we pride ourselves on delivering quality homes. We are now giving our valued customers peace of mind with a 30 Year Structural Guarantee so you can build with confidence knowing your home will stand the test of time.

# DESIGNER *Collection*







## CHOOSE COMFORT

This range of homes provides the ultimate in choice of layout, value and functionality throughout each of the home designs. The Designer Collection delivers a range of comfortable, practical and modern designs so you can create the home you desire and love being home every day.

# Be the ENVY OF THE STREET



Marbella - Delta Facade



Sierra - Chase Facade



Amalfi Two - Executive Facade



Corsica - Miami Facade



Classic facade is the standard no cost facade. All facades contain upgrades such as feature bricks, render, and are available at additional costs. Facade finishes allowed in base price and speak with





Choose your  
**IDEAL STYLE**

All other facades are upgrade options and available at an additional cost. Images of facades shown are to be used as a guide only and may differ depending on the house type chosen. Please refer to our current price list and specifications for facade options with your Building & Design Consultant for specific drawings on your chosen house type and facade.

# PRIVACY, FUNCTIONALITY AND BEAUTY INTO A *well-balanced design*

## AMALFI ONE



The front of the Amalfi One provides space to relax with a master suite to one side, featuring a sumptuous walk-in robe and ensuite, and a private living room on the opposite side for TV time.

Continuing through to the open plan kitchen, dining and family zones, you'll love making memories sitting up at the kitchen bench or watching the kids play outside from the family lounge area. Complete with three secondary bedrooms all with built-in robes, a family bathroom and a smart laundry with outdoor access, the Amalfi provides all the essentials and more for brilliant living.



Anaibi One



**Total m2 146.8**

10.27m Width x 17.03m Length

Family/Dining/Kitchen	5.9 x 6.6
Living	3.9 x 4.0
Master Suite	3.5 x 3.6
Bed 2	2.7 x 2.9
Bed 3	4.0 x 3.0
Bed 4	3.0 x 4.1
Alfresco Cabana (optional)	2.3 x 7.2

NOTE: Floor plan portrays the Classic Facade & will differ slightly with various facades. Block widths required may differ from area to area, please check with a consultant. Facade render for illustration purposes only. © Copyright Wilson Homes. Please see important notice on back page

# *Functional* DESIGNER HOME



The Amalfi draws together privacy, functionality and beauty into a well-balanced design. The front of the home provides space to relax with a master suite to one side, featuring a large walk-in robe and ensuite, and a private living room on the opposite side.

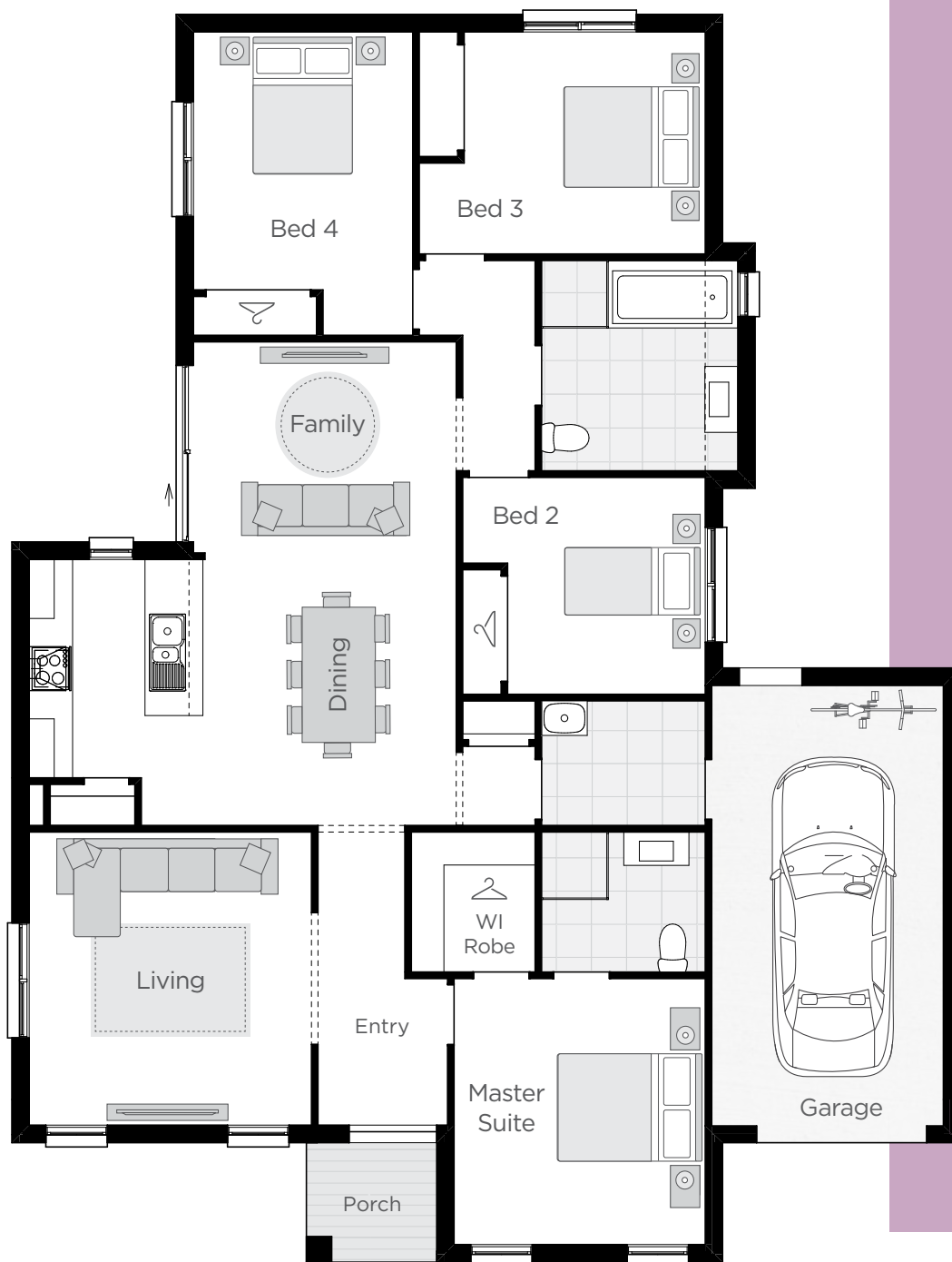
Continuing through to the open plan kitchen, dining and family zones, you'll love spending time with the family.

Complete with a single internal access Garage for convenience, the Amalfi Two provides all the essentials and more for a perfect home.



# AMALFI TWO

Amalfi Two



**Total m2 167**

13.11m Width x 17.03m Length

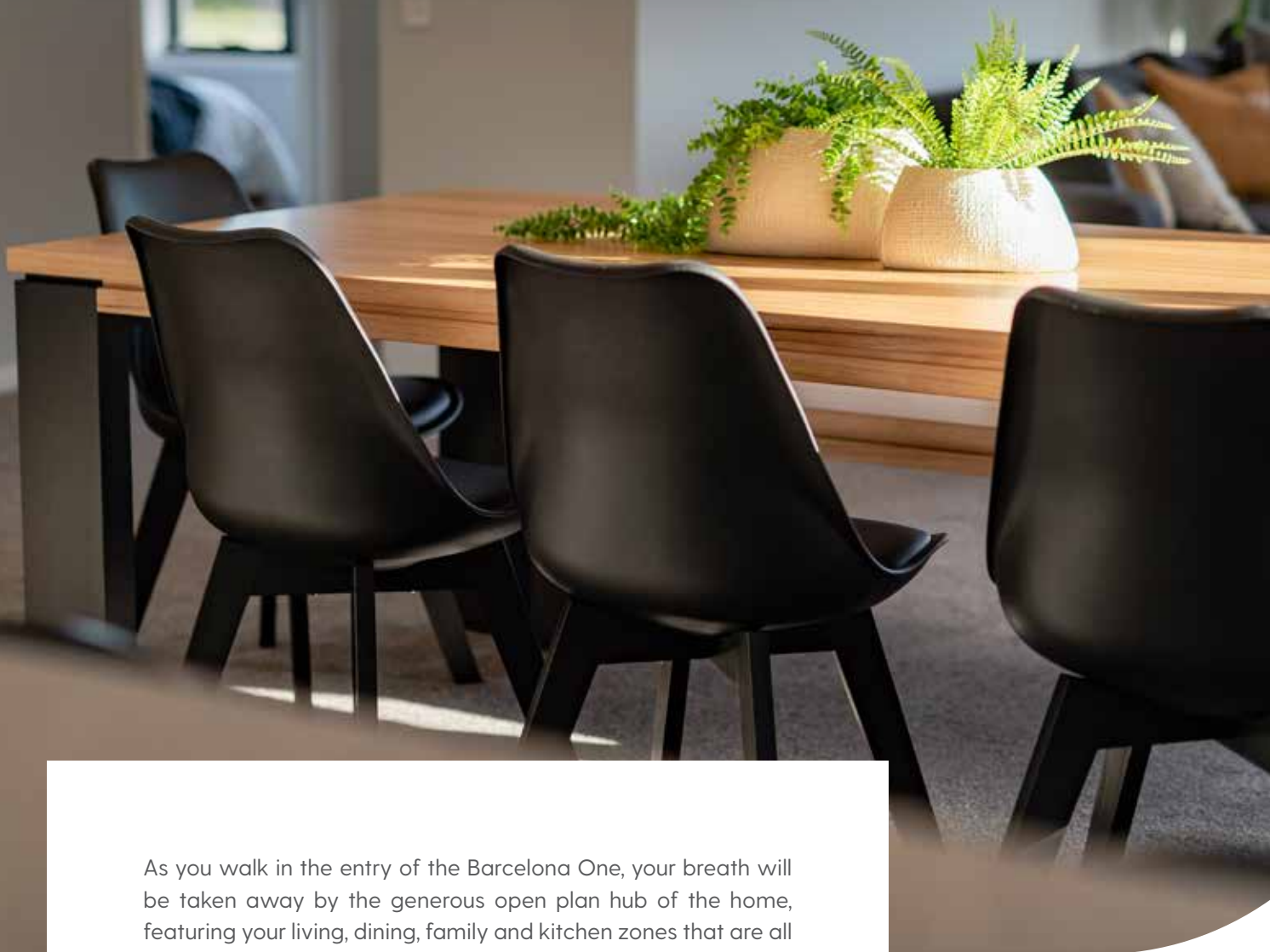
Family/Dining/Kitchen	5.9 x 6.6
Living	3.9 x 4.0
Master Suite	3.5 x 3.6
Bed 2	3.4 x 3.0
Bed 3	4.0 x 3.0
Bed 4	3.0 x 4.1
Garage	3.2 x 6.0

NOTE: Floor plan portrays the Classic Facade & will differ slightly with various facades. Block widths required may differ from area to area, please check with a consultant. Facade render for illustration purposes only. © Copyright Wilson Homes. Please see important notice on back page



# BARCELONA ONE

*A design that relishes in*  
**MODERN FEATURES + SPACE**



As you walk in the entry of the Barcelona One, your breath will be taken away by the generous open plan hub of the home, featuring your living, dining, family and kitchen zones that are all only steps away from the undercover optional alfresco. When it comes time to retire for the night, the kids have their own accommodation space off the dining that hosts the family bathroom, laundry and two bedrooms with built-in robes. Last but not least, the master suite resides at the front of the home, a peaceful retreat complete with ensuite and walk-in robe.

## Barcelona One



**Total m2 140.3**

10.00m Width x 16.03m Length

Living/Dining/Kitchen	5.4 x 13.2
Master Suite	3.6 x 3.5
Bed 2	3.0 x 3.0
Bed 3	3.6 x 3.0
Alfresco Cabana (optional)	1.5 X 3.3

NOTE: Floor plan portrays the Classic Facade & will differ slightly with various facades. Block widths required may differ from area to area, please check with a consultant. Facade render for illustration purposes only. © Copyright Wilson Homes. Please see important notice on back page

# BARCELONA TWO

The Barcelona Two offers a harmonious layout separated into an entertaining and an accommodation zone, to successfully celebrate everyday life. Filled with light from the adjoining outdoor patio, the open plan living, dining, kitchen and family spaces interweave to create the ultimate place to come together. The kitchen will especially win your heart, perfectly positioned to overlook all the action from the convenient yet stylish island bench and only a few steps away from the door out to the garden. Meanwhile, the three bedrooms remain to one side for peace and quiet, including a master suite that hosts a walk-in robe and ensuite, and all with easy access to the family bathroom.

OFFERING  
*harmonious*  
LIVING



## Barcelona Two



**Total m2 200.4**

23.310m Width x 10.760m Length

Family/Dining/Kitchen	5.9 x 6.6
Living	3.9 x 4.0
Master Suite	3.5 x 3.6
Bed 2	3.4 x 3.0
Bed 3	4.0 x 3.0
Bed 4	3.0 x 4.1
Garage	3.2 x 6.0
Alfresco Cabana (optional)	2.3 x 7.2

NOTE: Floor plan portrays the Classic Facade & will differ slightly with various facades. Block widths required may differ from area to area, please check with a consultant. Facade render for illustration purposes only. © Copyright Wilson Homes. Please see important notice on back page

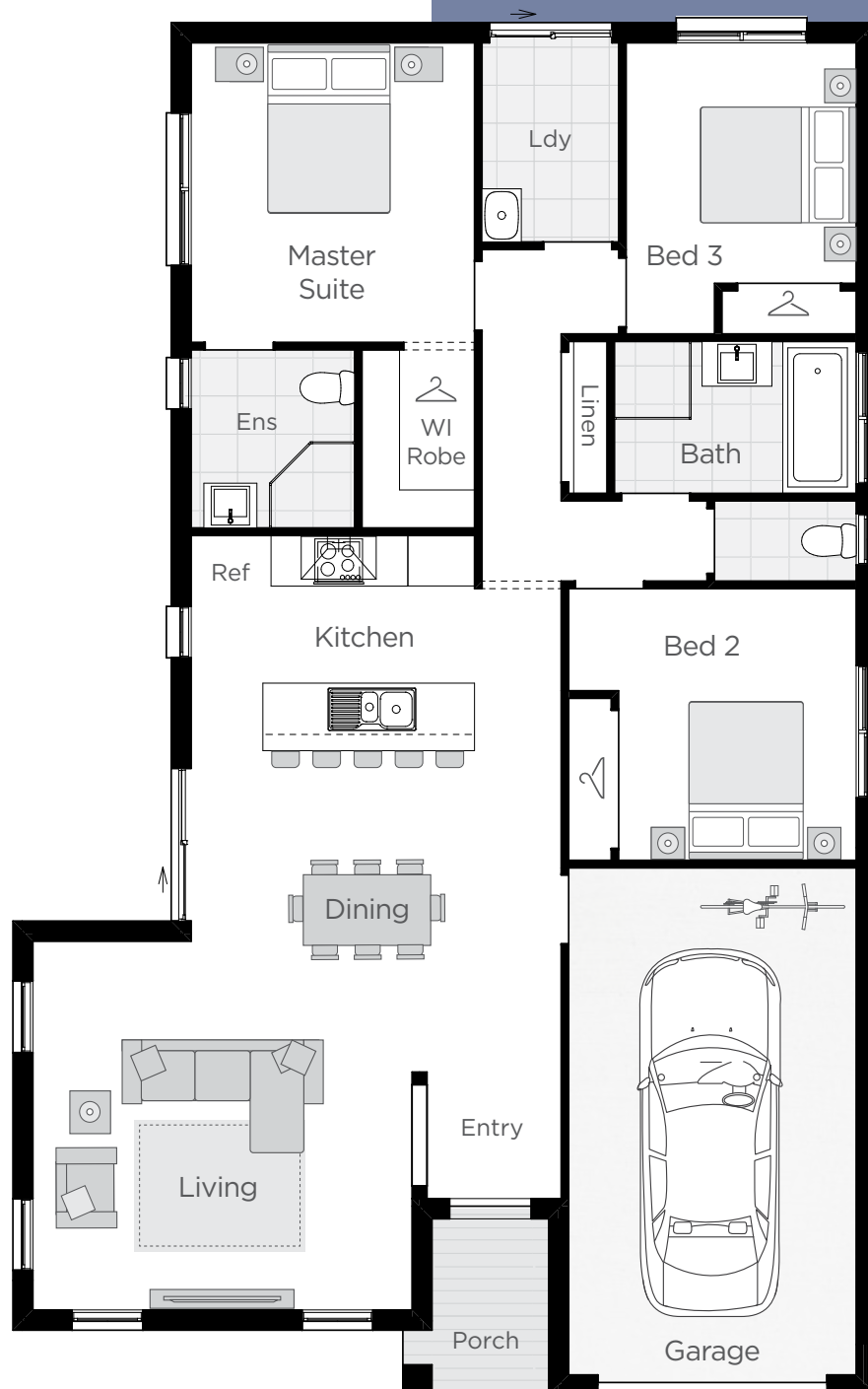


# A SMARTLY DESIGNED *light-filled* HOME

The Corsica is a thoughtfully-designed home that's just as perfect for the growing family, first-home buyer or investor. It's easy to create your ideal home with three good sized bedrooms and the light-filled open-plan Living, Dining and Gourmet Kitchen perfect for entertaining and relaxing so you love being home.

# CORSICA

Corsica



**Total m2 144.7**

10.36m Width x 16.26m Length

Living/Dining/Kitchen	6.3 x 9.2
Master Suite	3.4 x 3.6
Bed 2	3.5 x 3.2
Bed 3	2.8 x 3.5
Garage	3.5 x 6.0

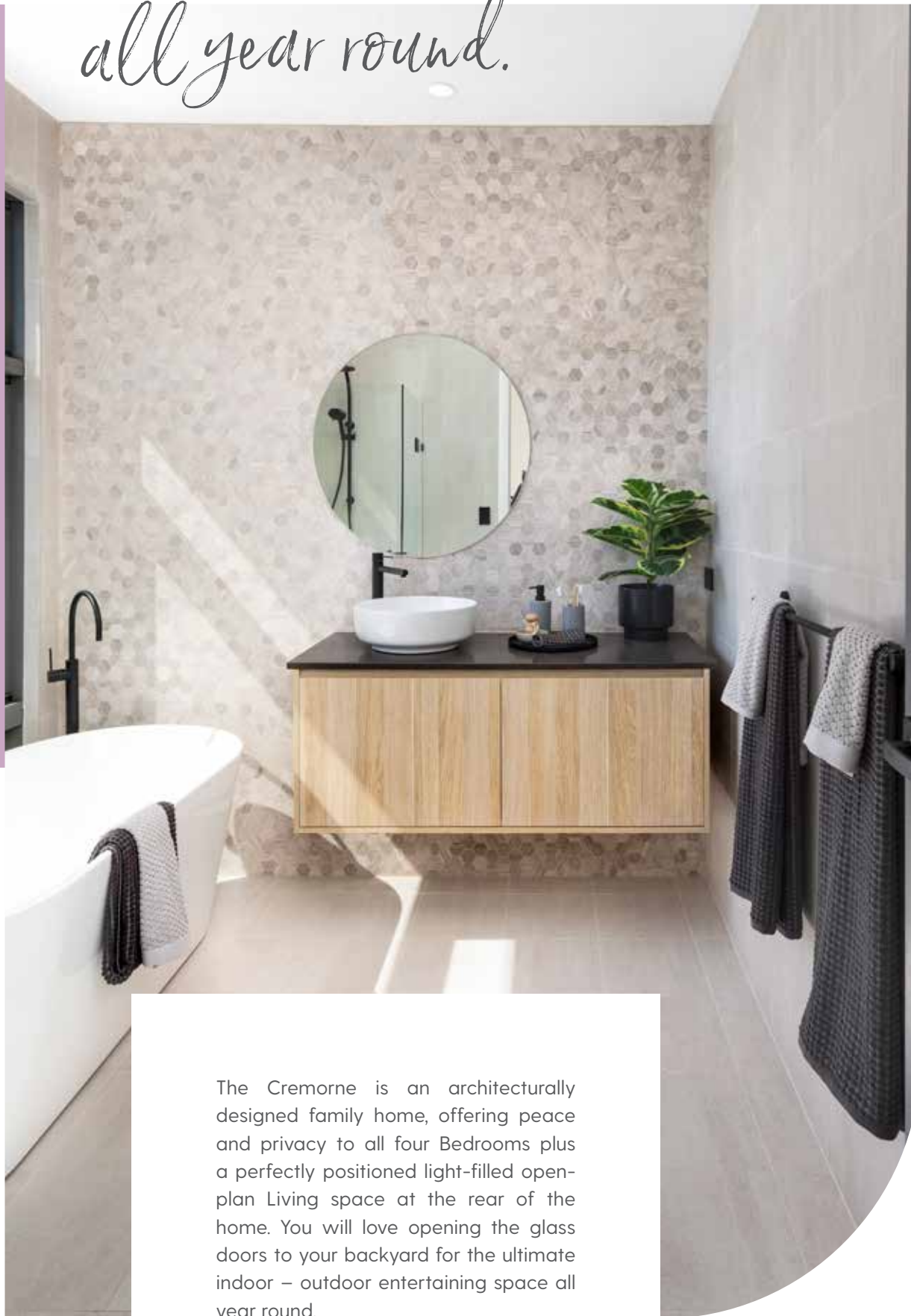
NOTE: Floor plan portrays the Classic Facade & will differ slightly with various facades. Block widths required may differ from area to area, please check with a consultant. Facade render for illustration purposes only. © Copyright Wilson Homes. Please see important notice on back page



ENJOY A COMFORTABLE  
FAMILY LIFESTYLE

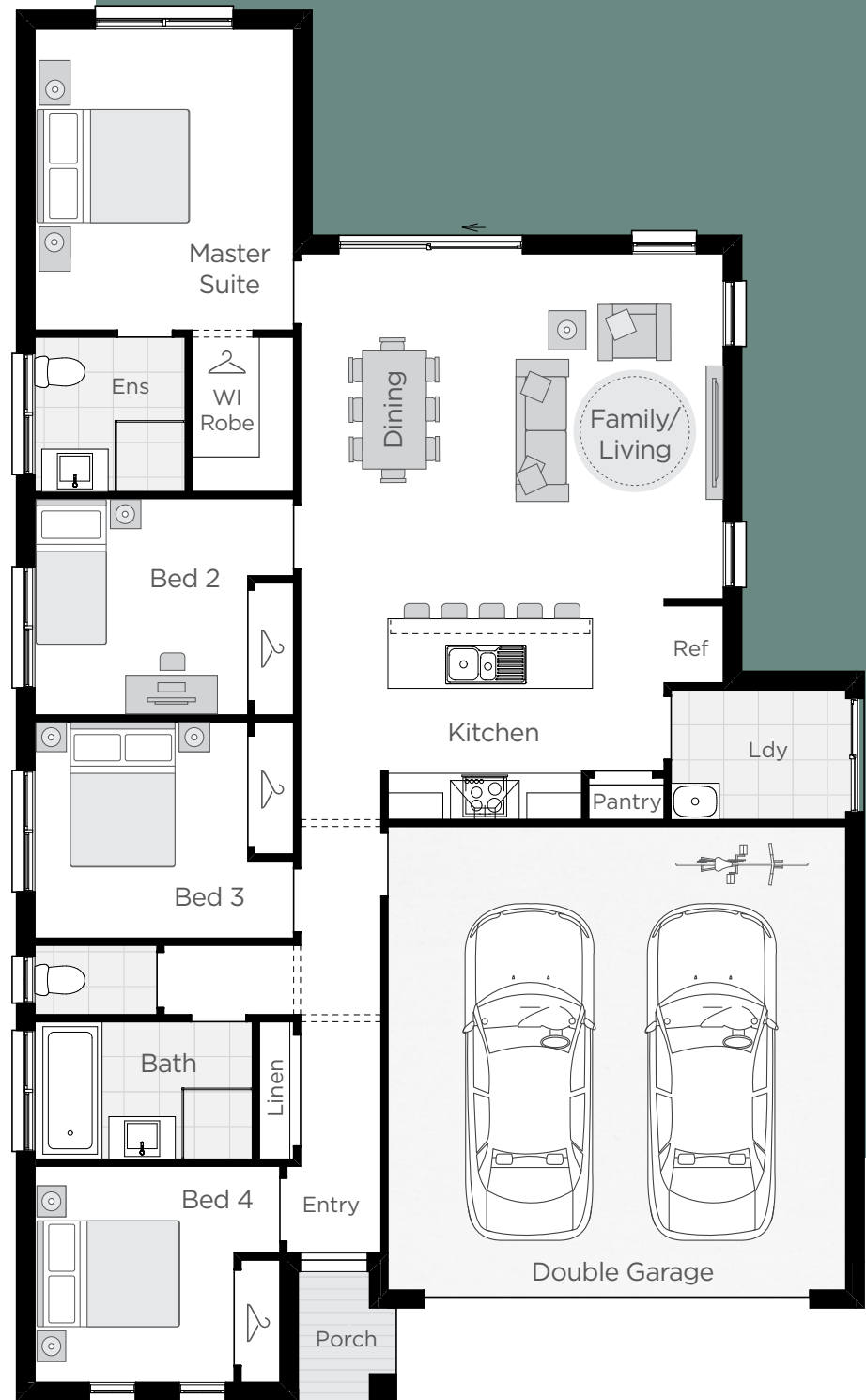
*all year round.*

# CREMORNE



The Cremorne is an architecturally designed family home, offering peace and privacy to all four Bedrooms plus a perfectly positioned light-filled open-plan Living space at the rear of the home. You will love opening the glass doors to your backyard for the ultimate indoor – outdoor entertaining space all year round.

Cremorne



**Total m2 162.39**

11.12m Width x 18.00m Length

Living/Dining/Kitchen	4.8 x 7.3
Master Suite	3.4 x 3.9
Bed 2	2.8 x 2.8
Bed 3	2.8 x 2.8
Bed 4	3.2 x 2.8
Garage	6.0 x 6.0

NOTE: Floor plan portrays the Classic Facade & will differ slightly with various facades. Block widths required may differ from area to area, please check with a consultant. Facade render for illustration purposes only. © Copyright Wilson Homes. Please see important notice on back page

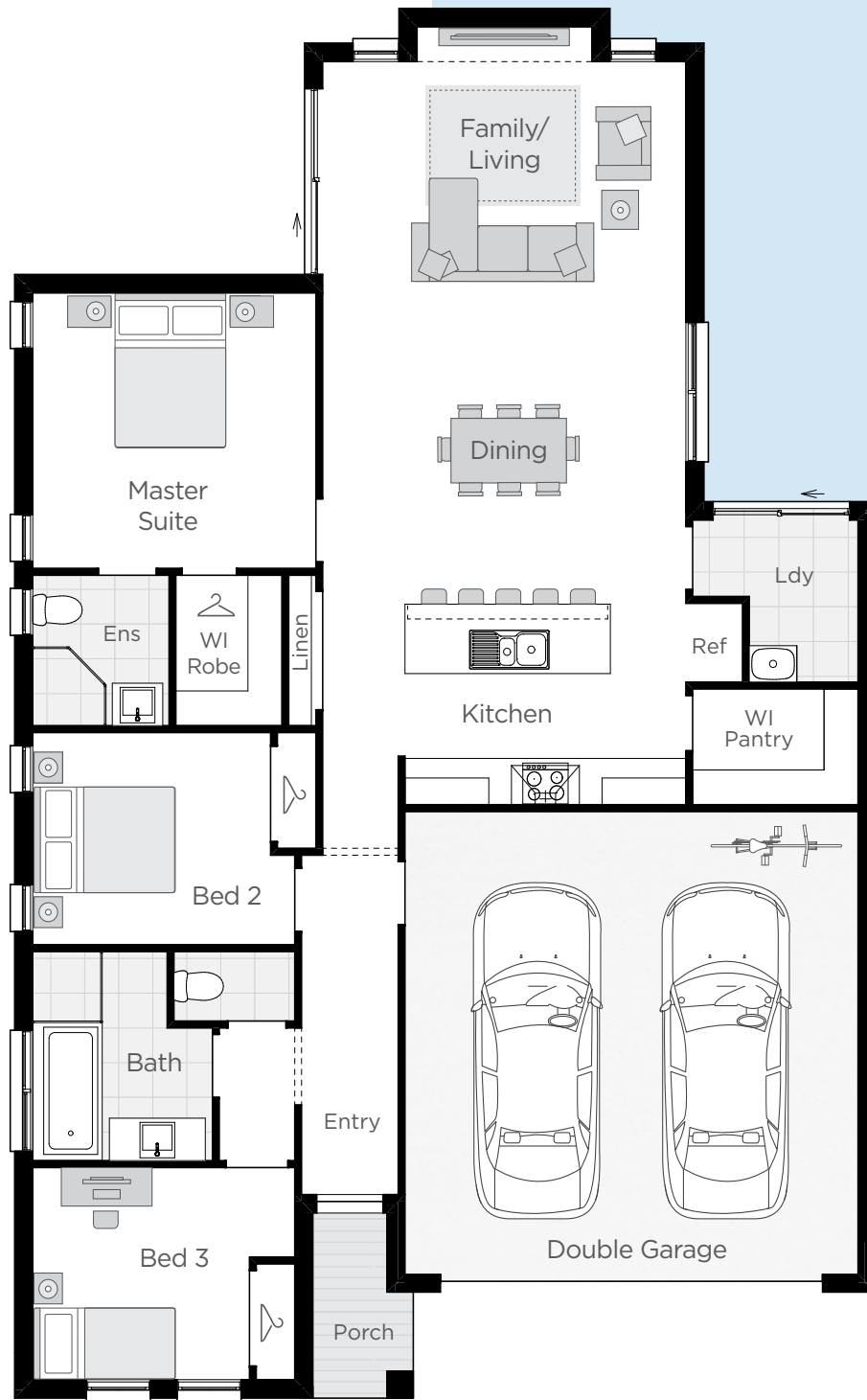
# ESQUIRE

A HOME WITH  
EVERYTHING  
YOU NEED &  
*nothing you don't*

The Esquire is designed to give you the most of contemporary living every day, without the effort required by a larger home. Complete with three bedrooms, including a large Master Suite and an open Living space with a modern Gourmet Kitchen. This design is perfect for a narrow block yet it will make you feel at home from the moment you walk through the door.



*Esquire*



**Total m2 168.22**

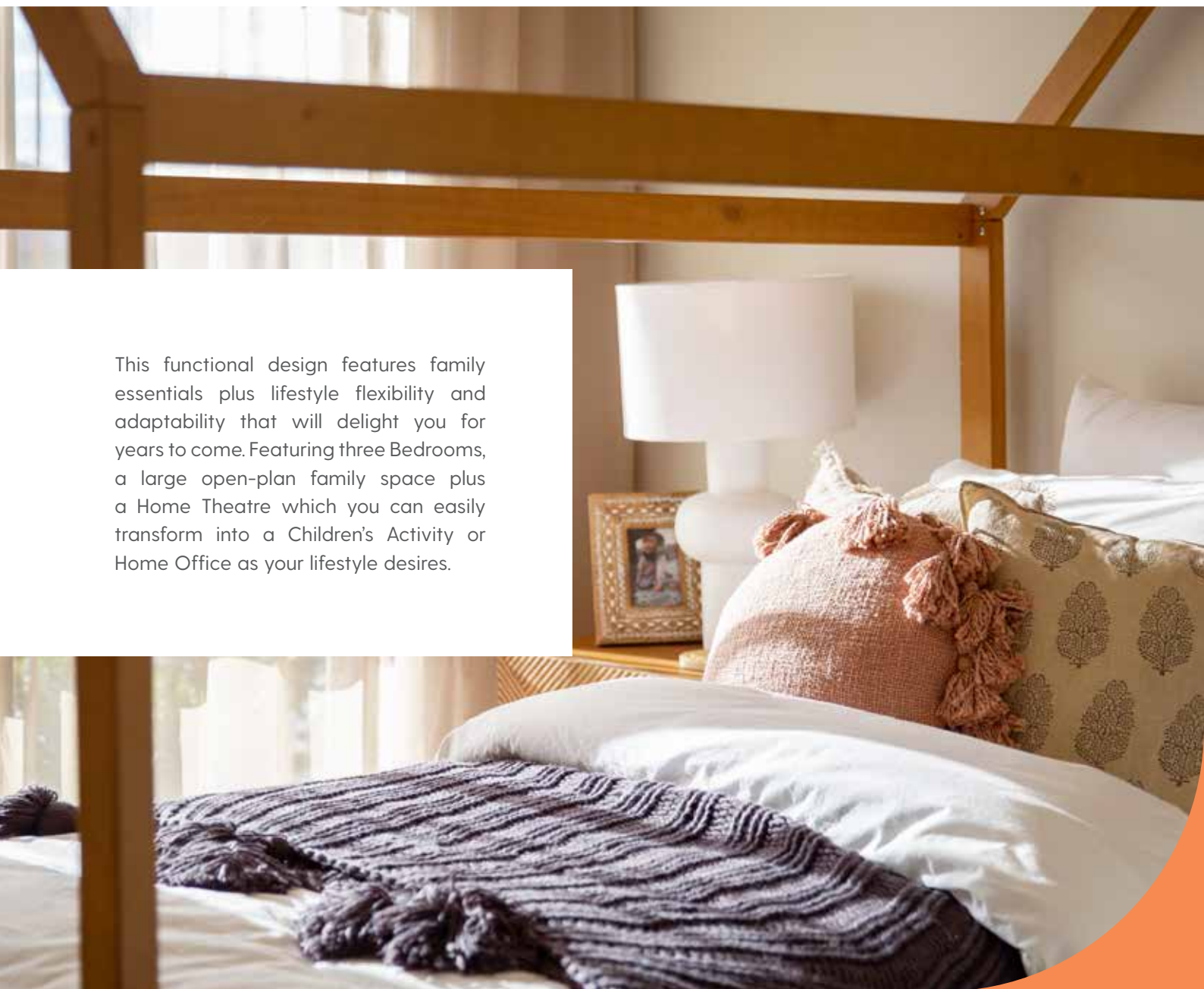
11.41m Width x 18.02m Length

Living/Dining/Kitchen	4.8 x 9.6
Master Suite	3.8 x 3.6
Bed 2	3.2 x 2.8
Bed 3	2.9 x 2.8
Garage	6.0 x 6.0

NOTE: Floor plan portrays the Classic Facade & will differ slightly with various facades. Block widths required may differ from area to area, please check with a consultant. Facade render for illustration purposes only. © Copyright Wilson Homes. Please see important notice on back page

# A HOME DESIGN PERFECT FOR NOW *and the future.*

This functional design features family essentials plus lifestyle flexibility and adaptability that will delight you for years to come. Featuring three Bedrooms, a large open-plan family space plus a Home Theatre which you can easily transform into a Children's Activity or Home Office as your lifestyle desires.



# GREENWICH

Greenwich



**Total m2 179.58**

11.49m Width x 19.75m Length

Living/Dining/Kitchen	4.9 x 8.1
Home Theatre	3.8 x 3.2
Master Suite	3.4 x 3.3
Bed 2	2.8 x 3.4
Bed 3	3.8 x 2.9
Garage	6.0 x 6.0

NOTE: Floor plan portrays the Classic Facade & will differ slightly with various facades. Block widths required may differ from area to area, please check with a consultant. Facade render for illustration purposes only. © Copyright Wilson Homes. Please see important notice on back page

# LEVANTE



## *Living in style* WITH ALL THE NECESSITIES COVERED

The four bedroom Levante home features built-in robes throughout, with a front positioned master suite that enjoys a spacious walk-in robe next to the chic ensuite. When it comes to entertaining you'll be the host with the most, overlooking the dining and family/living zones when preparing food at the glamorous kitchen island bench. With the added luxury of a two car garage and a well equipped family bathroom, the Levante is the perfect choice for modern families.



Levante



**Total m2 166.72**

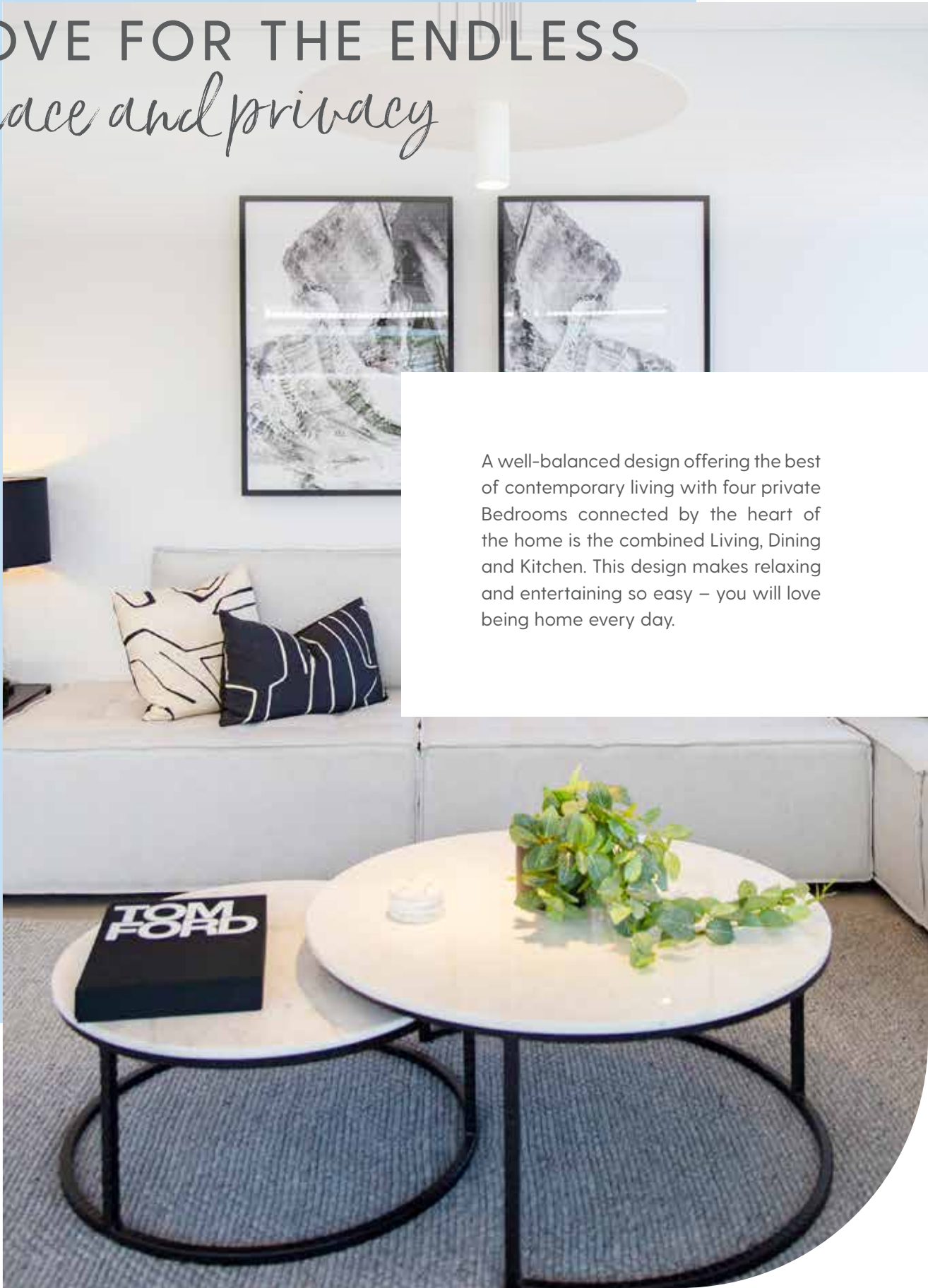
11.53m Width x 16.28m Length

Living/Dining/Kitchen	4.6 x 9.0
Master Suite	3.6 x 3.5
Bed 2	3.8 x 2.7
Bed 3	3.8 x 2.7
Bed 4	3.8 x 2.7
Garage	6.0 x 6.0
Alfresco Cabana (Optional)	2.4 x 7.3

NOTE: Floor plan portrays the Classic Facade & will differ slightly with various facades. Block widths required may differ from area to area, please check with a consultant. Facade render for illustration purposes only. © Copyright Wilson Homes. Please see important notice on back page

# LISBON

A HOME YOU WILL  
LOVE FOR THE ENDLESS  
*peace and privacy*



A well-balanced design offering the best of contemporary living with four private Bedrooms connected by the heart of the home is the combined Living, Dining and Kitchen. This design makes relaxing and entertaining so easy – you will love being home every day.

Lisbon



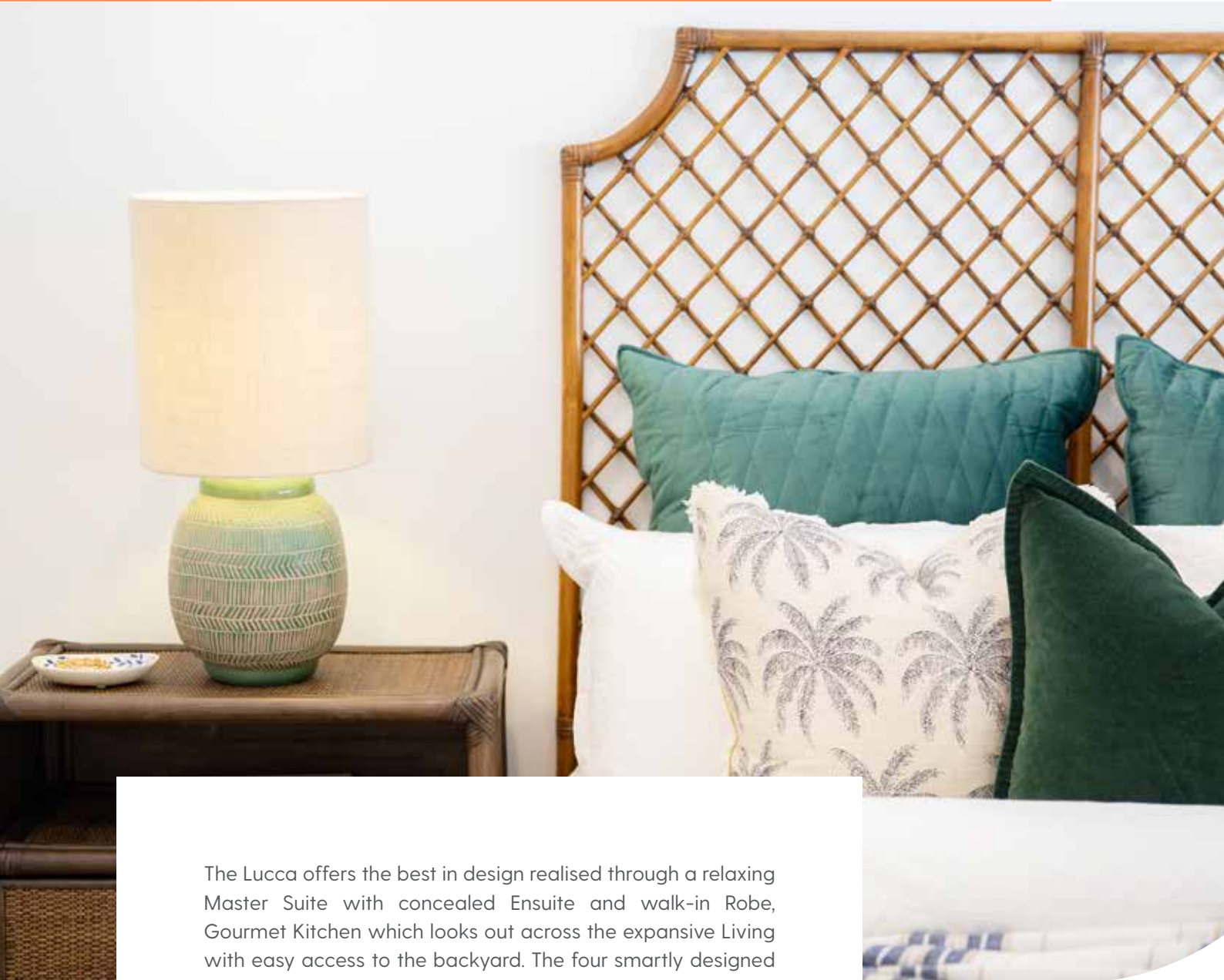
**Total m2 182.28**

11.55m Width x 17.32m Length

Living/Dining/Kitchen	6.9 x 6.8
Master Suite	3.5 x 3.8
Bed 2	3.5 x 3.2
Bed 3	3.0 x 3.1
Bed 4	3.3 x 3.1
Garage	6.0 x 6.0

NOTE: Floor plan portrays the Classic Facade & will differ slightly with various facades. Block widths required may differ from area to area, please check with a consultant. Facade render for illustration purposes only. © Copyright Wilson Homes. Please see important notice on back page

*A well-balanced design*  
**YOU WILL LOVE LIVING IN**



The Lucca offers the best in design realised through a relaxing Master Suite with concealed Ensuite and walk-in Robe, Gourmet Kitchen which looks out across the expansive Living with easy access to the backyard. The four smartly designed Bedrooms and Double Garage are ideal for a growing family.

**LUCCA**



Lucca



**Total m2 185.63**

12.30m Width x 18.40m Length

Living/Dining/Kitchen	5.8 x 6.6
Master Suite	4.0 x 4.2
Bed 2	3.3 x 3.4
Bed 3	3.9 x 3.0
Bed 4	3.0 x 4.1
Garage	6.0 x 6.0

NOTE: Floor plan portrays the Classic Facade & will differ slightly with various facades. Block widths required may differ from area to area, please check with a consultant. Facade render for illustration purposes only. © Copyright Wilson Homes. Please see important notice on back page

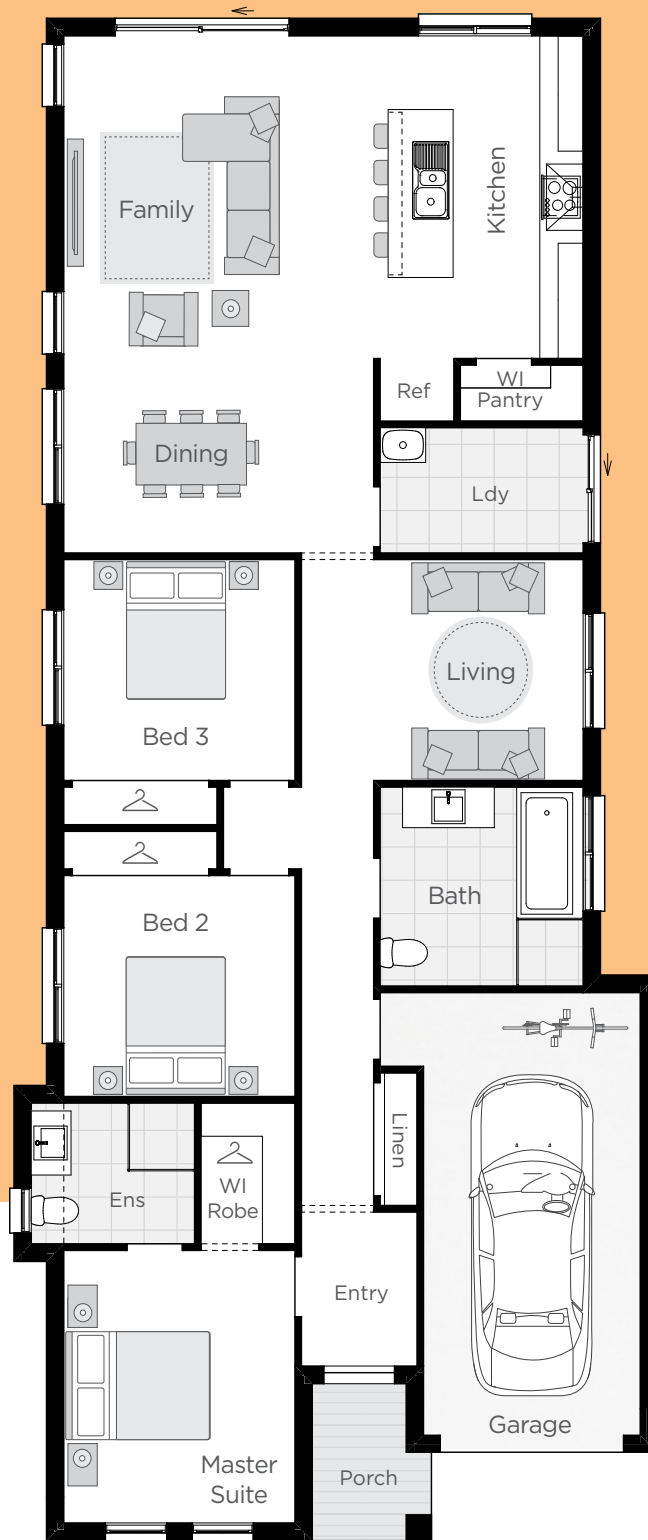
# ENJOY A *wonderful* COMPACT HOME

Modern living is all about functionality, ease and comfort which you will find throughout the Madrid. Enjoy every moment at home with a stylish Master Suite and two additional private Bedrooms with Robes. The wonderful open plan Dining, Family & Gourmet Kitchen is complimented by a separate Living which can be easily transformed into a Children's Retreat, Parents Retreat or Home Office whatever your lifestyle desires.

# MADRID



Madrid



**Total m2 161.93**

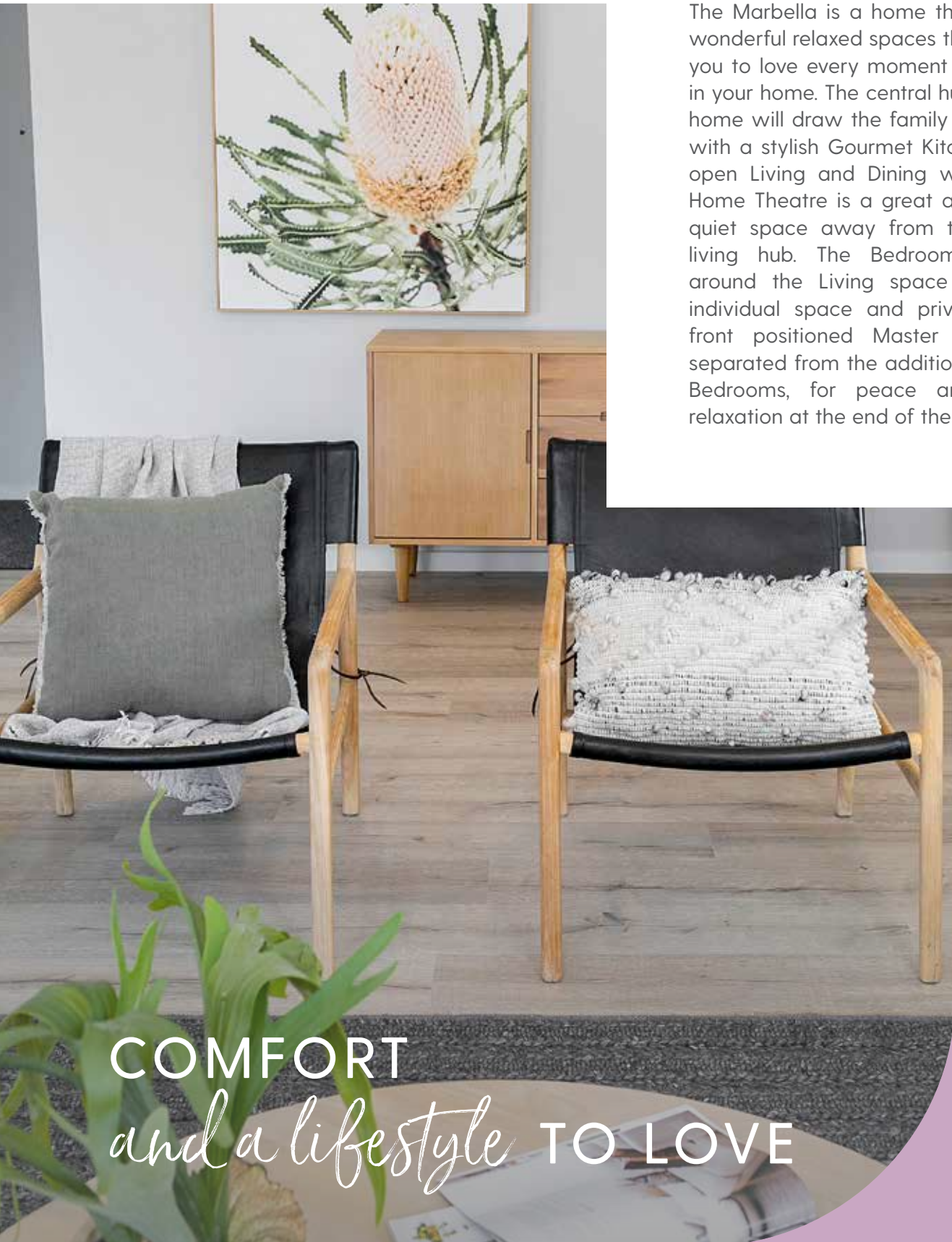
8.91m Width x 20.67m Length

Family/Dining/Kitchen	7.2 x 7.0
Living	3.3 x 3.5
Master Suite	3.2 x 3.7
Bed 2	3.2 x 3.0
Bed 3	3.2 x 3.0
Garage	3.0 x 6.0

NOTE: Floor plan portrays the Classic Facade & will differ slightly with various facades. Block widths required may differ from area to area, please check with a consultant. Facade render for illustration purposes only. © Copyright Wilson Homes. Please see important notice on back page

# MARBELLA

The Marbella is a home that offers wonderful relaxed spaces that invite you to love every moment of being in your home. The central hub of the home will draw the family together with a stylish Gourmet Kitchen and open Living and Dining whilst the Home Theatre is a great additional quiet space away from the main living hub. The Bedrooms wrap around the Living space offering individual space and privacy. The front positioned Master Suite is separated from the additional three Bedrooms, for peace and easy relaxation at the end of the day.



COMFORT  
*and a lifestyle* TO LOVE



Marbella



**Total m2 205.04**

13.24m Width x 18.80m Length

Living/Dining/Kitchen	6.1 x 5.0
Home Theatre	4.1 x 3.4
Master Suite	3.5 x 4.0
Bed 2	3.4 x 3.0
Bed 3	3.0 x 3.0
Bed 4	3.0 x 3.1
Garage	6.0 x 6.0

NOTE: Floor plan portrays the Classic Facade & will differ slightly with various facades. Block widths required may differ from area to area, please check with a consultant. Facade render for illustration purposes only. © Copyright Wilson Homes. Please see important notice on back page

# NEO

## RELAXATION, SPACE AND *pure enjoyment*



The Neo is a contemporary well thought out design creating space and privacy any family could desire for their forever home. Featuring a generous living area that flows onto the back yard, a Gourmet Kitchen and Home Theatre, this home will delight from day to night all year round.



Neo



**Total m2 189.74**

11.77m Width x 20.10m Length

Living/Dining/Kitchen	6.4 x 6.8
Home Theatre	3.3 x 3.5
Master Suite	3.2 x 3.7
Bed 2	4.0 x 2.9
Bed 3	2.9 x 3.0
Bed 4	2.9 x 3.3
Garage	6.0 x 6.0

NOTE: Floor plan portrays the Classic Facade & will differ slightly with various facades. Block widths required may differ from area to area, please check with a consultant. Facade render for illustration purposes only. © Copyright Wilson Homes. Please see important notice on back page

# A MASTER SUITE YOU'VE BEEN *dreaming of*

You'll immediately be impressed by the spaciousness of the open plan Living, Dining and Kitchen with direct access outdoors and with plenty of storage and a wonderful island bench, making busy mornings a breeze! Having guests over will be a treat with easy access from the Dining to the backyard and the Bedrooms all positioned at the rear for peace and privacy.

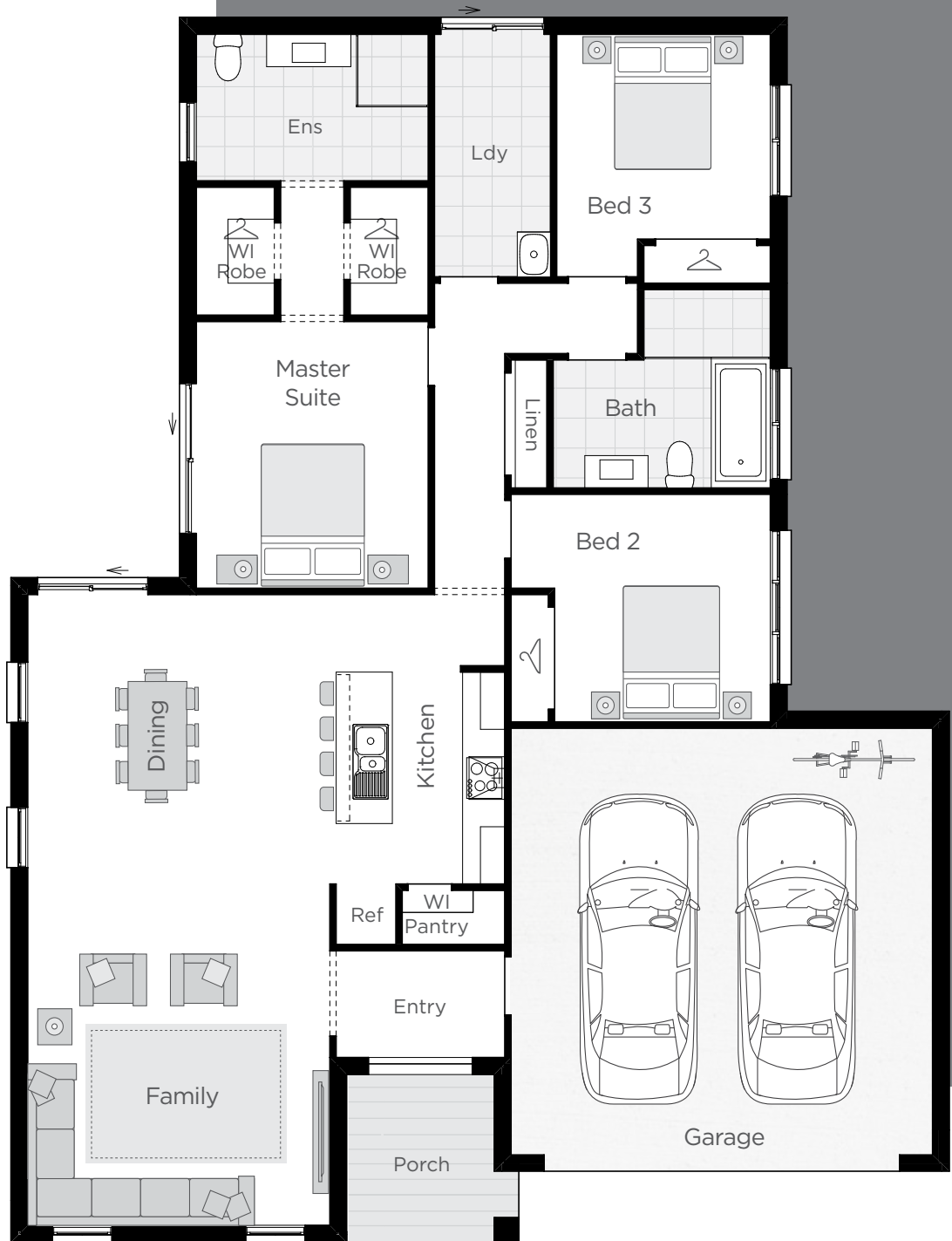


SANTORINI





Santorini



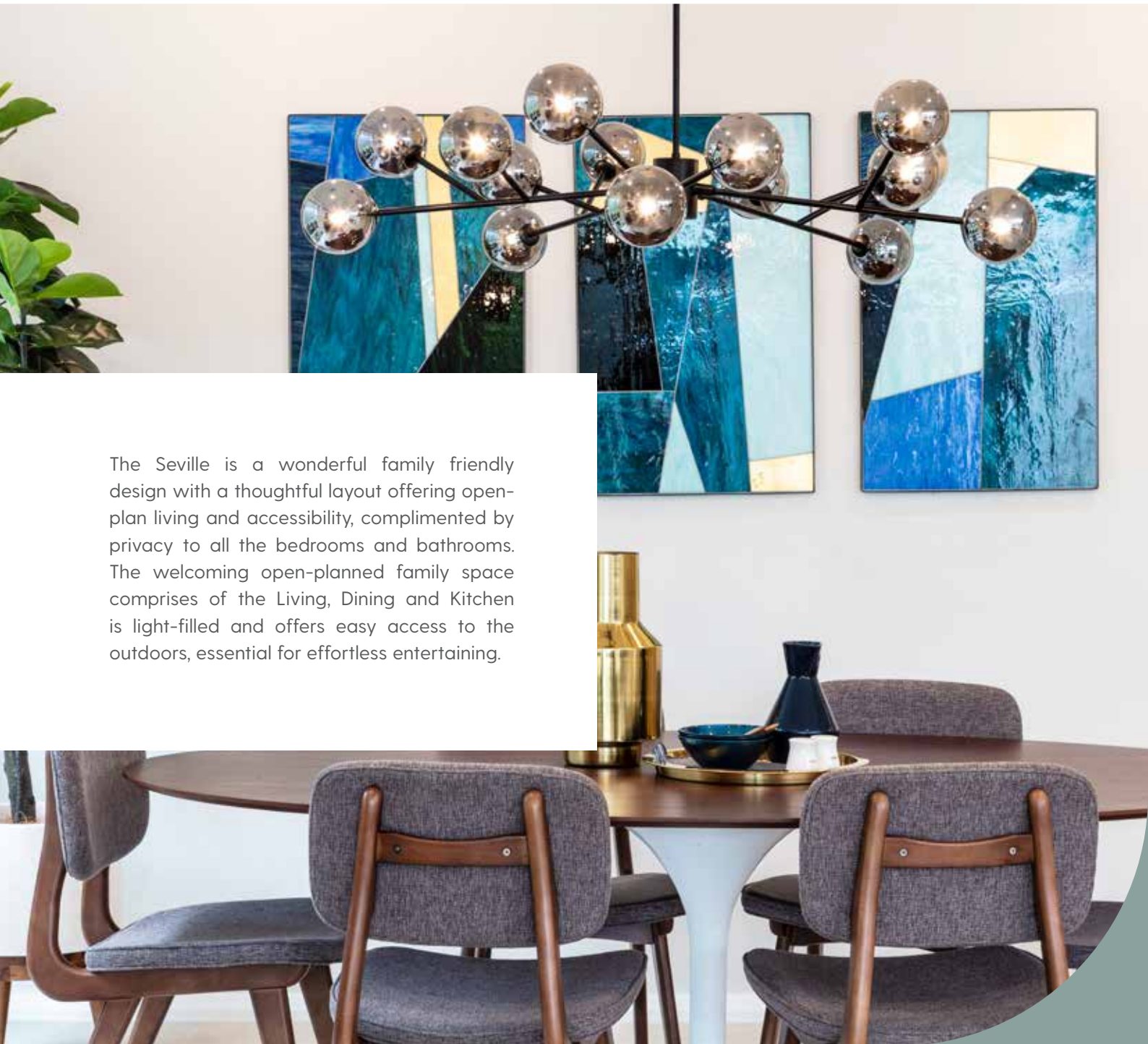
**Total m2 182.61**

13.36m Width x 17.23m Length

Living/Dining/Kitchen	6.8 x 8.9
Master Suite	3.3 x 3.8
Bed 2	3.0 x 3.2
Bed 3	3.0 x 3.4
Garage	6.0 x 6.0

NOTE: Floor plan portrays the Classic Facade & will differ slightly with various facades. Block widths required may differ from area to area, please check with a consultant. Facade render for illustration purposes only. © Copyright Wilson Homes. Please see important notice on back page

# ENJOY THE *beautiful flow* OF THIS MODERN HOME



The Seville is a wonderful family friendly design with a thoughtful layout offering open-plan living and accessibility, complimented by privacy to all the bedrooms and bathrooms. The welcoming open-planned family space comprises of the Living, Dining and Kitchen is light-filled and offers easy access to the outdoors, essential for effortless entertaining.

## SEVILLE

Seville



**Total m2 142.42**  
9.77m Width x 17.00m Length

Living/Dining/Kitchen	4.0 x 10.30
Master Suite	3.4 x 3.4
Bed 2	3.4 x 2.8
Bed 3	3.4 x 3.0
Garage	3.3 x 6.1

NOTE: Floor plan portrays the Classic Facade & will differ slightly with various facades. Block widths required may differ from area to area, please check with a consultant. Facade render for illustration purposes only. © Copyright Wilson Homes. Please see important notice on back page

# SIERRA

*Endless options*

TO TRANSFORM YOUR HOME

The Sierra is family living at its best offering multiple spaces to relax, unwind and enjoy being home. The design is ideal for growing families with a large open plan living space, located at the heart of the home, and a Home Theatre which can be easily transformed into a Home Office, Parents Retreat or Guest Room as needed. This smartly designed home offers comfortable family living you will adore for years to come.

Sierra



**Total m2 190.13**

11.70m Width x 18.37m Length

Living/Dining/Kitchen	6.8 x 7.2
Home Theatre	3.7 x 2.9
Master Suite	3.8 x 3.5
Bed 2	2.8 x 3.0
Bed 3	2.8 x 3.3
Bed 4	3.0 x 3.3
Garage	6.0 x 6.0

NOTE: Floor plan portrays the Classic Facade & will differ slightly with various facades. Block widths required may differ from area to area, please check with a consultant. Facade render for illustration purposes only. © Copyright Wilson Homes. Please see important notice on back page



# Exceptional living TO TURN YOUR HOME DREAMS INTO A *reality*

You'll love cooking in your gourmet kitchen that overlooks the dining and living zones. And when it's time for dinner, the kids' are only a heartbeat away from the central living area. Meanwhile, your spacious master suite with a walk-in robe and ensuite lies at the front of the home for you to escape to at the end of the day. Combined with all the extra little considerations, like being able to take off your muddy boots in the laundry before coming in from the garage and having a dedicated study for reading and learning, the Vienna is a home designed for modern living.

VIENNA



*Vienna*



**Total m2 154.8**

12.05m Width x 16.30m Length

Living/Dining/Kitchen	4.0 x 7.9
Master Suite	4.1 x 3.5
Bed 2	3.5 x 3.0
Bed 3	3.5 x 3.0
Garage	3.3 x 5.9
Study	2.7 x 1.8

NOTE: Floor plan portrays the Classic Facade & will differ slightly with various facades. Block widths required may differ from area to area, please check with a consultant. Facade render for illustration purposes only. © Copyright Wilson Homes. Please see important notice on back page

# DESIGNER *Collection*



**1300 595 050**  
**wilsonhomes.com.au**

**South** 250 Murray Street, Hobart Tasmania  
**North** 117-119 Elizabeth Street, Launceston Tasmania  
**North West** 83 Mount Street, Burnie Tasmania

IMPORTANT NOTICE: Images of facades shown are a guide only. Material finishes shown are purely an expression of the artist. Please refer to our current price list and specifications for facade finishes allowed in published price. Facades shown apply to the standard plan. Images in this flyer may depict fixtures, finishes and features not supplied by Wilson Homes such as furnishings, landscaping, plants, decking and water features. Accordingly, published prices do not include the supply of any of these items. Images may also depict optional variations to the home design which incur additional costs. Plans are not shown to scale and all measurements are approximate only. Wilson Homes reserves the right to modify designs or specifications without notice. For detailed home pricing, including details about the standard inclusions for the house and charges for optional variations, please talk to one of our Building & Design Consultant. © Wilson Homes. All rights reserved. No part of this brochure may be reproduced, stored in a retrieval system or transmitted in any form or by any means without the prior written permission of Wilson Homes. Wilson Homes Tasmania Pty Ltd. ABN: 96 126 636 89 7. BLN: 669843674.